

ODE_{v.1}

ODE_{V.1}

noun

a lyric poem, An *ode* is a kind of poem, usually praising and respecting something .

OPEN
DAY | ENSEMBLE

SPRING 2017

Open Day Ensemble 01

Editorial Panel:

Enam Rabbi Adnan
Iffat Salwa Nova
Shuvra Das

Level 4 Term 1:

Ariful Haque Shawon, Tahfiz Pihan, Syed Afaz Ul Mahmud, Saiful Islam, Muniruzzaman,
Faisal Enam

Level 4 Term 2:

Hassim Reza, Imran Khan, Mark Ankon Halsona, Taufiq Hasan, Tousifur Rahman

Open Day and Model Making Workshop Organization:

Tinpaach (তিনপাঁচ)
35th Batch

Photo Credits:

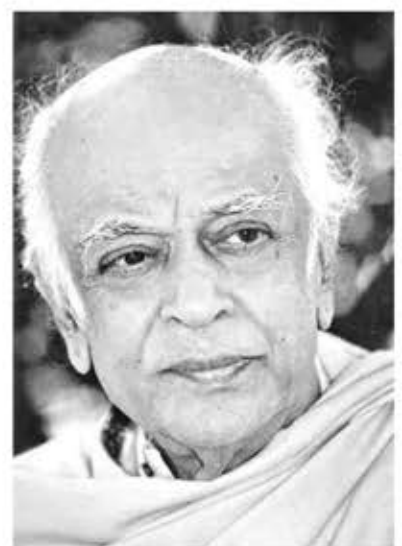
The images used by this publication are taken or edited by UAP students, alumni and faculty members.

Published in 2018 by
Department of Architecture,
University of Asia Pacific
74/A Green Road
Dhaka 1215
Bangladesh

All rights reserved. No part of this publication may be reproduced or transmitted in any form or by any means, electronic or mechanical, including photocopy, recording or any information storage and retrieval system, without prior permission in writing from the publisher.

In Commemoration
of the *Sthapatyacharya*

MUZHARUL ISLAM
(1923-2012)



Student Editorial



We are indeed very happy to present you the first copy of ODE (Open Day Ensemble) volume 01. ODE means lyrical poem to praise, respect or love something, this publication reflects our lyrical efforts of becoming an Architecture student.

This publication is a combined effort of all the students, respected teachers and helpful staffs around us. In this auspicious moment of celebrating our journey of the session Spring 2017, I would like to thank all our respected alumni, beloved juniors and senior brothers and sisters, without whom this effort would be in vain.

We expect this publication would be the platform in forthcoming days to share our projects to the greater arena of the Architecture in Bangladesh.







Exhibition
Selected Drawings of
Ar. Muzharul Islam

courtesy: Ar. Muzharul Islam Architects



INSTITUTE OF FINE ARTS
At Bahawalpur, Dhaka

PUBLIC LIBRARY
At Dhaka University, Dhaka

ARCHITECTS OWN RESIDENCE
At Sharmistha, Dhaka
PROPOSAL FOR DEVELOPMENT OF PARADISE

GRADUATE PROJECTS
At Yale University, USA





JOURNEY OF INVENTION

ROUGH SHANBAGH CULTURAL CORRIDOR

This display board contains a large site map on the left side, showing a network of paths and green spaces. To the right of the map is a grid of approximately 12 small photographs showing various landscape and architectural details. Text is interspersed between the images and at the top of the board.

LIVING IN FARMGATE, DHAKA

AT THE INTERSECTION OF THE PIONEER

This board is filled with architectural drawings. At the top, there are three small diagrams showing different building forms. Below these is a large site plan with green areas and building footprints. Further down is a detailed floor plan of a building. At the bottom, there is a long architectural cross-section showing the internal structure and levels of a building.

This vertical board displays a series of photographs showing architectural models and site views. It also includes some architectural diagrams and text, providing a visual narrative of the project.



DESIGN
STUDIO



SOLID AND VOID

Duration: 1 week

Material properties: polished wood

Objective: composing three dimensional space by arranging the solids and voids to create a flow of air and light which will cast different types of shadow.

Each student had to work on a base of 1ft by 1ft. And then all the projects were connected which initiated a different quality of solid and void that can be called unity in variety.

Findings: balance, harmony and rhythm in three dimensional composition.

Submitted by: fall 2017



CUBIC CONFLICT

Creating a maze with cube. The objective was to create space through 12" by 12" cube constructed of 1" by 1" cube papaer.the space created through out the entire cube had to flow all around the surface.light would enter through the empty space and also create a play of shade and shadow.



TEXTURE

This project was to collect something from nature that we can feel. Texture can be felt by touchong, seeing or merely by the shadows created by light. It helped us to critically evaluate the different quality of materials.



OLIGOLI GHURI FIRI

A group project where we did a survey of different sites and explored the city of dhaka. Learned how to communicate with people and work outside the comfort zone. Then we did a abstract representation of each site.



ABSTRACTION
SUBMITTED BY:
SPRING 2017

ACRYLIC PAINTING ON CANVAS



Acrylic painting is a fast drying paint made of pigment suspended in acrylic polymer emulsion. Acrylic paints are water-soluble, but become water-resistant when dry.

RELIEF WORK

Relief work with mud was a very interesting and new experience for the class. It is basically done in 3 ways- raised, sunken and extract. We bought mud from different places, then prepared the mud by getting rid of all the air stuck inside it.



2D & 3D WEAVING

Weaving is a technique of building flat surface or a 3d object by intertwining two strips of material without the use of glue or any adhesive. In this project we had to create four 2d surfaces each with different material and also a 3d object.

SUBMITTED BY:
SPRING 2017



MINI FURNITURE ROBOT

It was the semester final project of spring 2017. This project required to solve some problems, think about functions and aesthetics. A furniture made with cardboard in which all kinds of necessary accessories for class time could be stored here.





DESIGN
STUDIO



DESIGNING

COURSE MENTORS: JIMI CHAKMA | UDDAY SHANKUR DATTA

WITH

PROJECT DURATION: ONE WEEK

NATURE

SEMESTER: SPRING 2017

PROJECT DESCRIPTION:

CONCEPT OF THIS DESIGN CAME FROM SPIRAL OPENING AND CLOSING MECHANISM, WHICH I HAVE OBSERVED IN SPIRAL ALOE. WHEN IT BLOOMS, IT SPREADS AND WHEN I REVERSE THE SYSTEM IT CLOSES IN MY SPACE. I HAVE MADE AN OPEN SPACE WHICH CAN TURN INTO SEMI OPEN SPACE AND FINALLY IT CAN BE TURNED INTO ENCLOUSER. THE SCALE OF MY SPACE IS HUGE WHEN IT IS OPENED AND MONUMENTAL WHEN IT IS CLOSED.

STEPS:

STEP-01:



STEP-02:



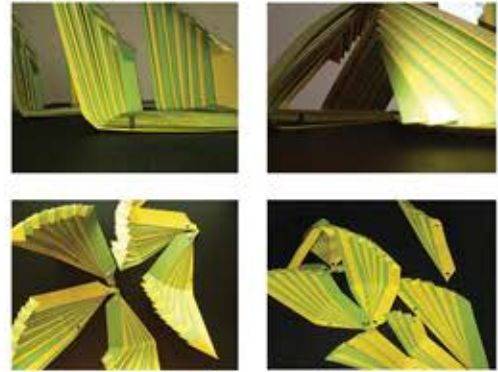
STEP-03:



STEP-04:



MODEL IMAGES:

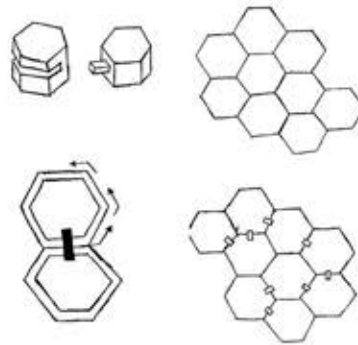


SUBMITTED BY: TAMANNA TASNIM
REGISTRATION NO.: 16204001

PROJECT DESCRIPTION:

COMPOUND EYE OF DIAMONDBACK MOTH, MICROSCOPIC VIEW. FIRSTLY I NOTICED THAT THERE ARE HEXAGONAL SHAPE IN COMPOUND EYE OF DIAMONDBACK MOTH. THEN I DECIDED TO MAKE A SPACE WITH SIMILAR SHAPE & THE ORDER. FOR THAT I HAVE TO MODIFY THAT ORDER IN MANY IDEAS & MAKES SOME MECHANISM WITH THIS. ALL THE HEXAGONAL OBJECTS CAN BE SLIDE AT ANY DIRECTION. THE OBJECT CAN ALSO MOVE UP AND DOWN SIDE. THE FULL STRUCTURE CAN CONVERT AT ANY SHAPES AND HEIGHT ALSO CAN CHANGE.

DRAWINGS:



MODEL IMAGES:

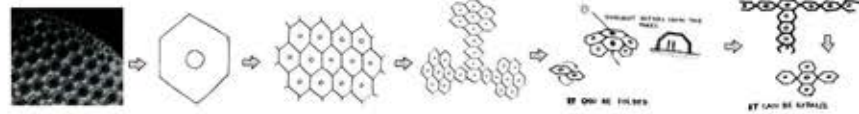


SUBMITTED BY: ARIFA LIMA
REGISTRATION NO.: 16204006

PROJECT DESCRIPTION:

PEOPLE ALWAYS INSPIRED FROM NATURE. EVERY NATURAL ELEMENT MAINTAIN SOME RULES. I AM INSPIRED FROM THE SHAPE OF MOSQUITO SKIN. THERE WAS A HEXAGONAL SHAPE WITH A CIRCLE. A MOSQUITO SKIN IS FULL OF HEXAGON SHAPE WITH A SMALL CIRCLE.

TRANSFORMATION OF THE FORM:



MODEL IMAGES:

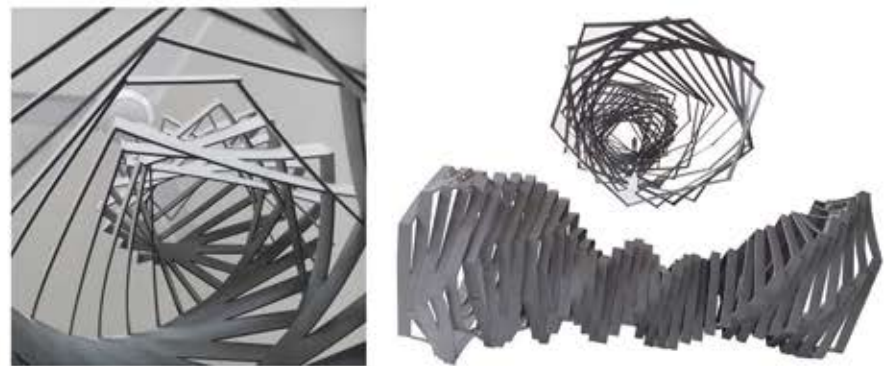


SUBMITTED BY: MD. JAHDUL KARIM MAKSUD
REGISTRATION NO.: 16204008

PROJECT DESCRIPTION:

PEOPLE ALWAYS INSPIRED FROM NATURE. EVERY NATURAL ELEMENT MAINTAIN SOME RULES. I AM INSPIRED FROM DNA SHAPE BECAUSE IT IS THE SMALLEST PART OF OUR BODY AND IT'S SHAPE IS REALLY ATTRACTIVE. IN ADDITION, DNA MAINTAIN DOUBLE HELIX PATTERN.

MODEL IMAGES:

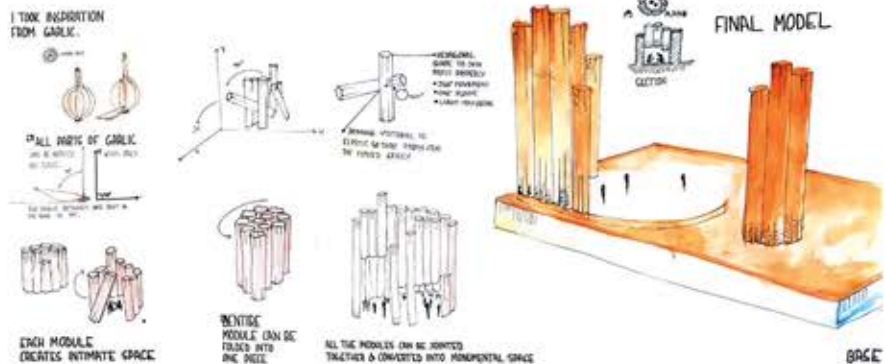


SUBMITTED BY: MD. ARIFUZZAMAN
REGISTRATION NO.: 16204009

PROJECT DESCRIPTION:

I TOOK INSPIRATION FROM GARLIC. I HAVE CREATED INDIVIDUAL MODULES. EACH MODULES CREATES INTIMATE SPACE. MODULES CAN BE FOLDED INTO ONE PIECE. ALL THE MODULES CAN BE JOINED TOGETHER AND CONVERTED INTO A MONUMENTAL SPACE.

DRAWINGS:



SUBMITTED BY: HUMAIRA AHMED TIHI
REGISTRATION NO.: 16204014

CONNECTION OF COMPLEXITY

COURSE MENTORS: JIMI CHAKMA | UDDAY SHANKUR DATTA

PROJECT DURATION: ONE WEEK

SEMESTER: SPRING 2017

PROJECT DESCRIPTION:

OUR MAIN CONCEPT OF THIS PROJECT WAS THREE DIFFERENT WAYS TO MAKE IT DIFFERENT. THEY SEEM LIKE THE SAME EVEN IF THEY ARE NOT EXACTLY MATHC. OBJECT WILL NOT BE 90° ANGLE AND IT WILL BE CURVE. AS A MATERIAL FOR THIS WORK, I FIRST TOOK REGIN. BUT IT'S QUITE DIFFICULT TO USE. SO, I MADE MY PRELIMINARY MODEL WITH CEMENT. THE FINAL MODULES ARE MADE WITH CLAY. THE FINAL MODEL IS MADE WITH THREE SEPARATE MODULES MADE FORM CLAY.

SUBMITTED BY: SANJIDA IZO
REGISTRATION NO.: 16204005

PROJECT DESCRIPTION:

FIRST OF ALL, THIS TASK WAS THE CONNECTION OF COMPLEXITY AND THE VARIERY OF MATERIALS. AS A MATERIAL I FIRST LIKED SILICON. BUT THE USE OF SILICON IS DIFFICULT AND BECAUSE OF IT'S INSUFFICIENTION IS USE CEMENT AS A MATERIAL. AT FIRST THE OBJECT WAS PREPARED WITH A MIXTURE OF CEMENT, SAND AND PUT IT FOR CURING. THE CORKSHEET IS REMOVED WITH CHLOROFORM AT THE END CURING. OF THE CREATED OBJECTS ARE PUT TOGETHER THEN THE RELATION BETWEEN ONE AND THE OTHER IN THE FLOWING SPACE IS FORMED.

A COMPLETE MODEL IS PRODUCED FROM THESE THREE MODULES.

SUBMITTED BY: ARIFA LIMA
REGISTRATION NO.: 16204006

PROJECT DESCRIPTION:

THE TASK WAS TO MAKE THREE MODULES THOSE ARE CONNECTED WITH SPACE OR LIGHT OR SOMETHING ELSE.

I HAVE TRIED TO MAKE A JOURNEY THROUGH SPACE WHEN ANYONE GO THROUGH THE SPACE ONE SUDDEN TIME HE/SHE WILL LOST IN SPACE.

AT FIRST MODULE THERE WAS A COMPLETE JOURNEY THROUGH THE SPACE. BUT IN THE SECOND ONE THE SPACE HAD LOST SPECIFIC AREAS. IN THE LAST ONE THERE IS NO SPECIFIC AREA OF SPACE.

SUBMITTED BY: MD. JAHIDUL KARIM MAKSUD
REGISTRATION NO.: 16204008

PROJECT DESCRIPTION:

THE TARGET OF THIS PROJECT WAS TO MAKE THREE SCULPTURES WHICH ARE SIMILAR BUT NOT EXACTLY SAME. AND THIS THREE SCULPTURES HAS SOME CONNECTION. IT COULD BE A GEOGRAPHICAL, AESTHETICAL CONNECTION OR A CONNECTION WITH TEXTURE, FORM, COLOUR, MATERIALS, ETC. IN THIS PROJECT I WANTED TO MAKE THREE OBJECT S WHICH WILL BE ONE COMPLEX OBJECT AS A WHOLE. AT FIRST I HAVE SKETCHED SOME COMPLEX OBJECTS AND FINALLY I HAVE SELECTED ONE. THEN I HAVE SELECTED ACRYLIC FOR THIS DESIGN. AFTER THAT I HAVE HEATED THE ACRYLICS TO MAKE THE SHAPE BUT COULD NOT MAKE THE DESIGN WHICH I HAVE DRAWN.

SUBMITTED BY: MD. ARIFUZZAMAN
REGISTRATION NO.: 16204009

PROJECT DESCRIPTION:

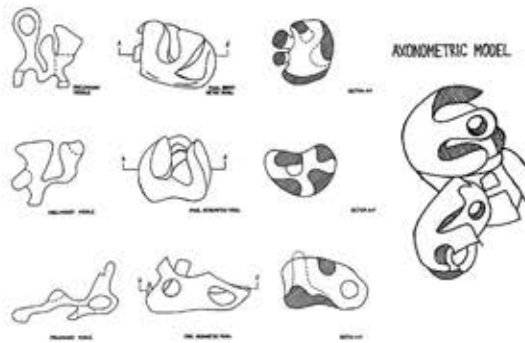
THE TASK WAS TO MAKE THREE SCULPTURAL SPACES WHICH WILL HAVE CONNECTION BETWEEN THEM.

FOR THIS PROJECT I HAVE TRIED TO TELL A STORY OF DEFORMATION OF AN OBJECT.

IN THE FIRST SCULPTURE THE OBJECT WAS STARTED TO DEFORM. THEN IT BEGAN TO TRANSFORM INTO PARTICLE FORM, IN THE END OF THE SECOND SCULPTURE. FINALLY IT WAS COMPLETELY TRANSFORMED INTO PARTICLE FORM IN THE LAST SCULPTURE.

SUBMITTED BY: SYED ALI AHMAD
REGISTRATION NO.: 16204020

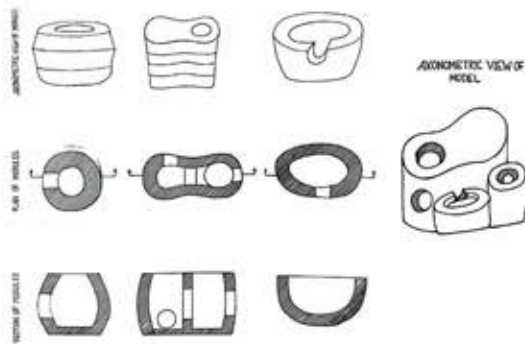
FREEHAND DRAWINGS:



MODEL IMAGES:



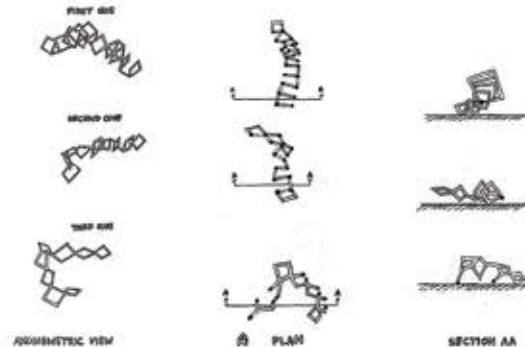
FREEHAND DRAWINGS:



MODEL IMAGES:



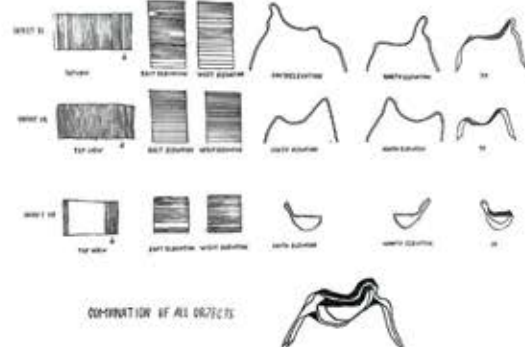
FREEHAND DRAWINGS:



MODEL IMAGES:



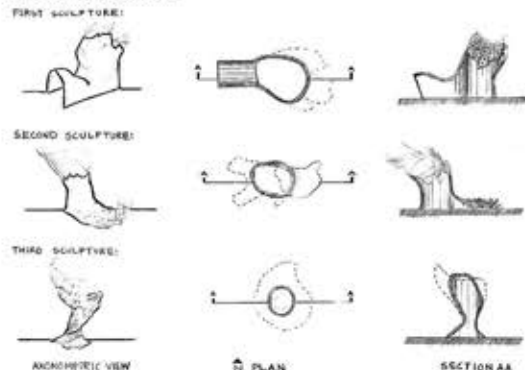
FREEHAND DRAWINGS:



MODEL IMAGES:



FREEHAND DRAWINGS:



MODEL IMAGES:



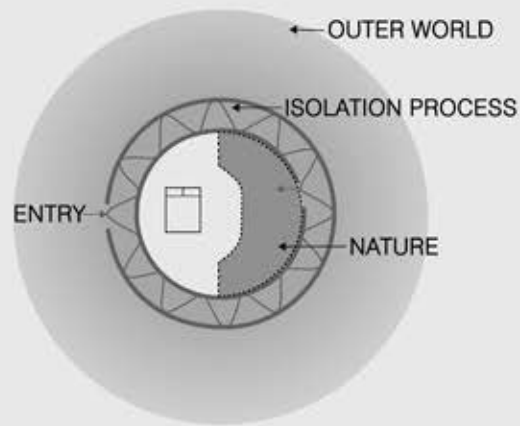
DESIGN
STUDIO



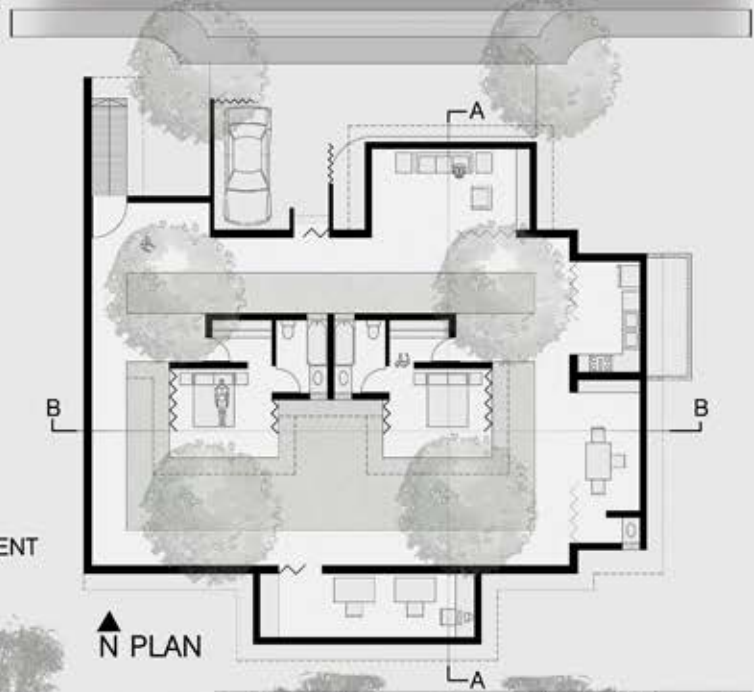
CONNECTING UNIT ACTIVITIES

PRIMARY ACTIVITY - SLEEPING

ISOLATED SLEEPING SPACE IN NATURE.
THE CONCEPT IS , BREAK FROM OUTER WORLD AND
PEACEFUL UNINTURRUPTED SLEEP IN NATURE.



CONCEPTUAL DIAGRAM OF SLEEPING ENVIRONMENT



NORTH ELEVATION

WEST ELEVATION

SOUTH ELEVATION

EAST ELEVATION

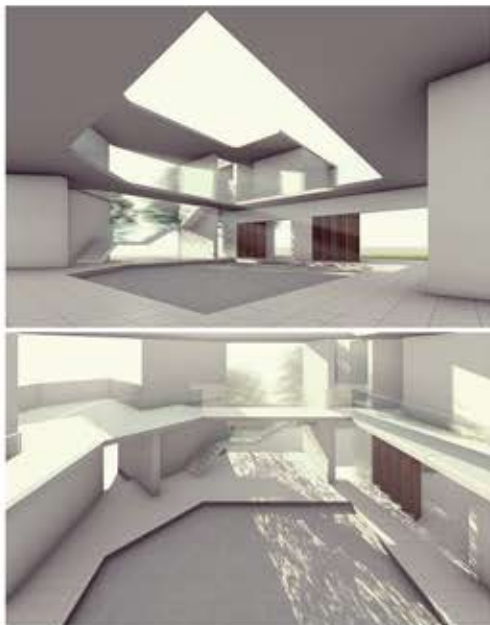
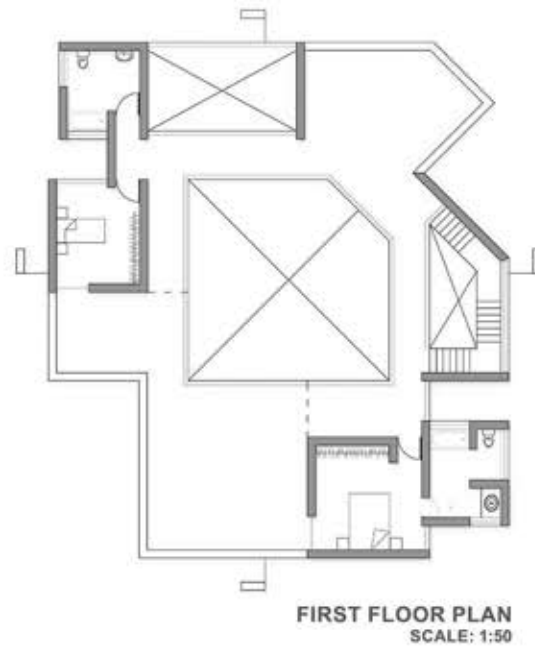
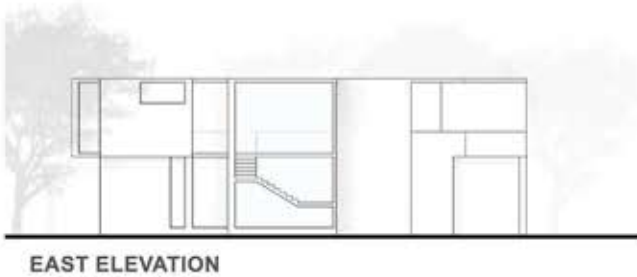
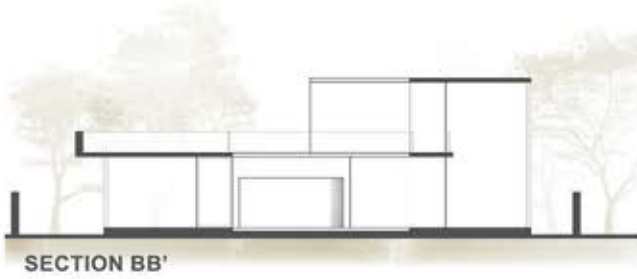
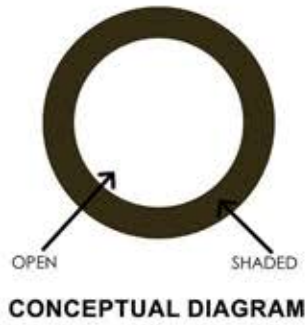
SECTION AA

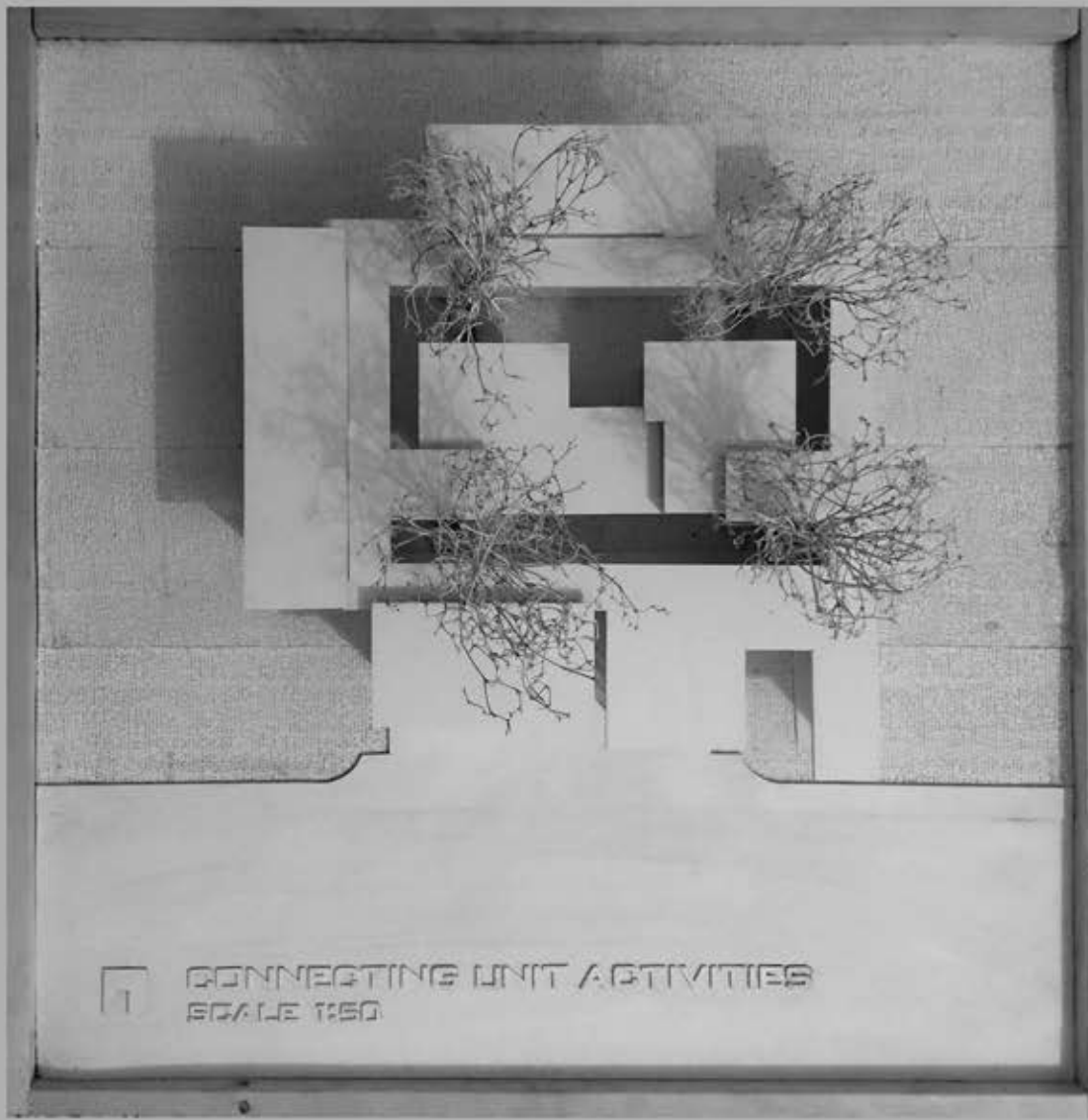
SECTION BB



CONNECTING UNIT ACTIVITES

LIVING ENVIRONMENT





Connecting Unit Activities
Tabassum Sultana
Level-2 | Term-1

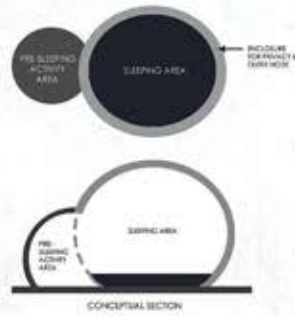


Connecting Unit Activities
Mohammad Nayem
Level-2 | Term-1

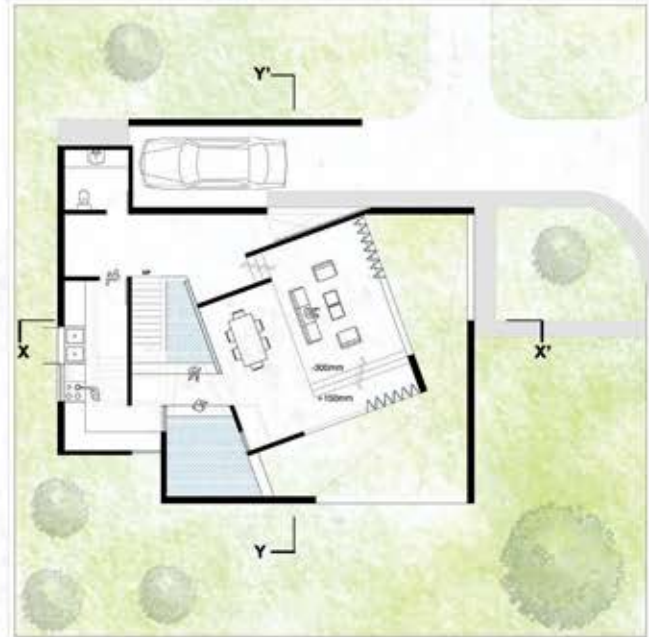
CONNECTING UNIT ACTIVITIES

PRIMARY ACTIVITY - SLEEPING

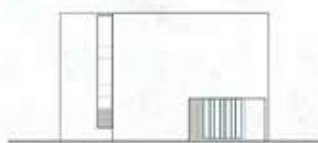
SLEEPING AREA AND THE PRE-SLEEPING ACTIVITY AREA IS DIVIDED BY ENCLOSURE. PRE-SLEEPING AREA IS FOR RELAXATION SUCH AS READING BOOKS AND THERE IS A WATER FALL WALL WHICH CREATE WHITE NOISE. OUTER ENCLOSURE WILL ENSURE PRIVACY AND PREVENT OUTER NOISE FROM SLEEPING AREA.



CONCEPTUAL DIAGRAM OF SLEEPING ENVIRONMENT



GROUND FLOOR PLAN



SOUTH ELEVATION



EAST ELEVATION



NORTH ELEVATION



WEST ELEVATION



FIRST FLOOR PLAN



SECOND FLOOR PLAN



SECTION XX'



SECTION YY'





DESIGN
STUDIO

iV

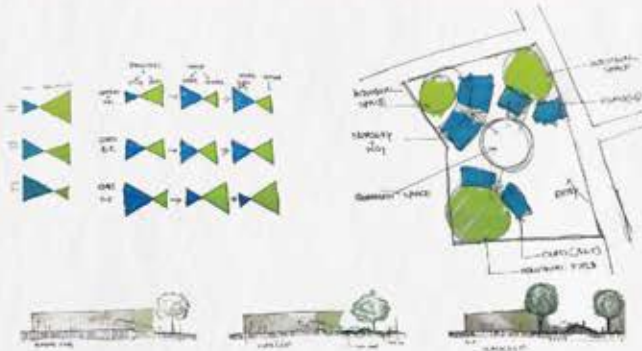
DESIGN OF AN ELEMENTARY SCHOOL

AT MOHAMMADPUR

The design is of a school for elementary students. The school consisted of 7 classes that was divided and grouped together. Kindergarten and nursery grouped together while classes 1-3 and 4-5 kept grouped. Each of the groups required individual characterizing and thus that was kept into the design decision. With that a common area for gathering was kept within.

Kindergarten and nursery requires more indoor space for children than outdoor thus the design kept more internal space for the children kept in mind.

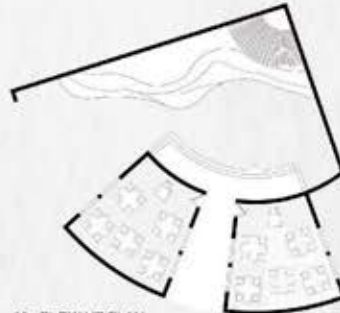
Classes 1 to 3 require an equal proportion of space when it comes to indoor and outdoor space so the design decision was done such that it held equal importance for both kind of space. Classes 4 and 5 require more outdoor space rather than indoor therefore outdoor space was kept into consideration.



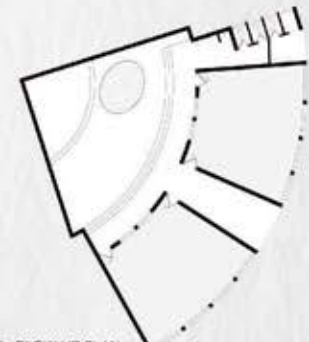
GROUND FLOOR PLAN



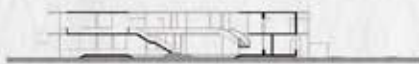
1st FLOOR PLAN
SCALE: 1/8" = 1'-0"



BLOW UP PLAN
SCALE: 1/8" = 1'-0"



BLOW UP PLAN
SCALE: 1/8" = 1'-0"



SECTION A-A
SCALE: 1/16" = 1'-0"



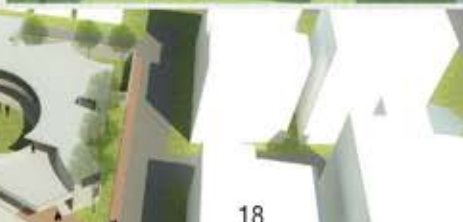
BLOW UP SECTION
SCALE: 1/8" = 1'-0"



SECTION B-B
SCALE: 1/16" = 1'-0"



BLOW UP SECTION
SCALE: 1/8" = 1'-0"



NORTH ELEVATION



SOUTH ELEVATION



EAST ELEVATION



WEST ELEVATION

DESIGN OF A ELEMENTARY SCHOOL

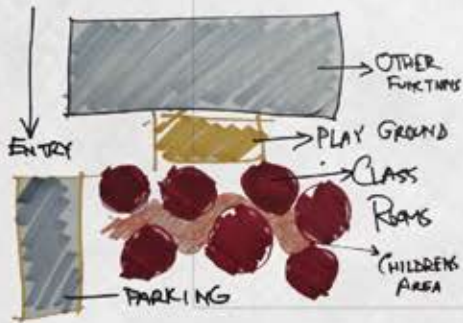
The concept for my school was named Hide and Seek. The thoughts behind it was to focus on what do children like the most? That is to play. To build a playful space was the target. Thinking of the theme one of the most popular games among children was hide and seek which was tried to be transformed architecturally. Keeping all the norms of basic architecture in mind the environment was composed by walls designing a flow, as the children loves free flow in everything. Creating the school more playful and enjoyable by interconnecting the spaces and provide various spatial experience to the users were tried. When comes peer concerns, parents could always have an eye on their children from above. The whole design of the class rooms and around was tried to be composed based on the theme, hide and seek. Hide-and-seek is a popular children's game which any number of players conceal themselves in the environment, to be found by one or more seekers. The games played by one player chosen closing their eyes and counting to a predetermined number while the other players hide.

CONCEPT :
HIDE AND SEEK

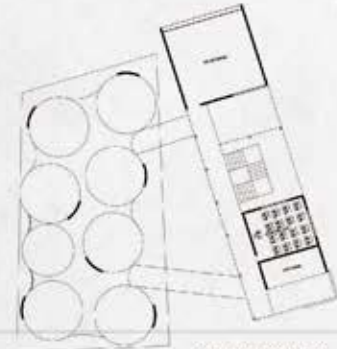
BUBBLE DIAGRAM

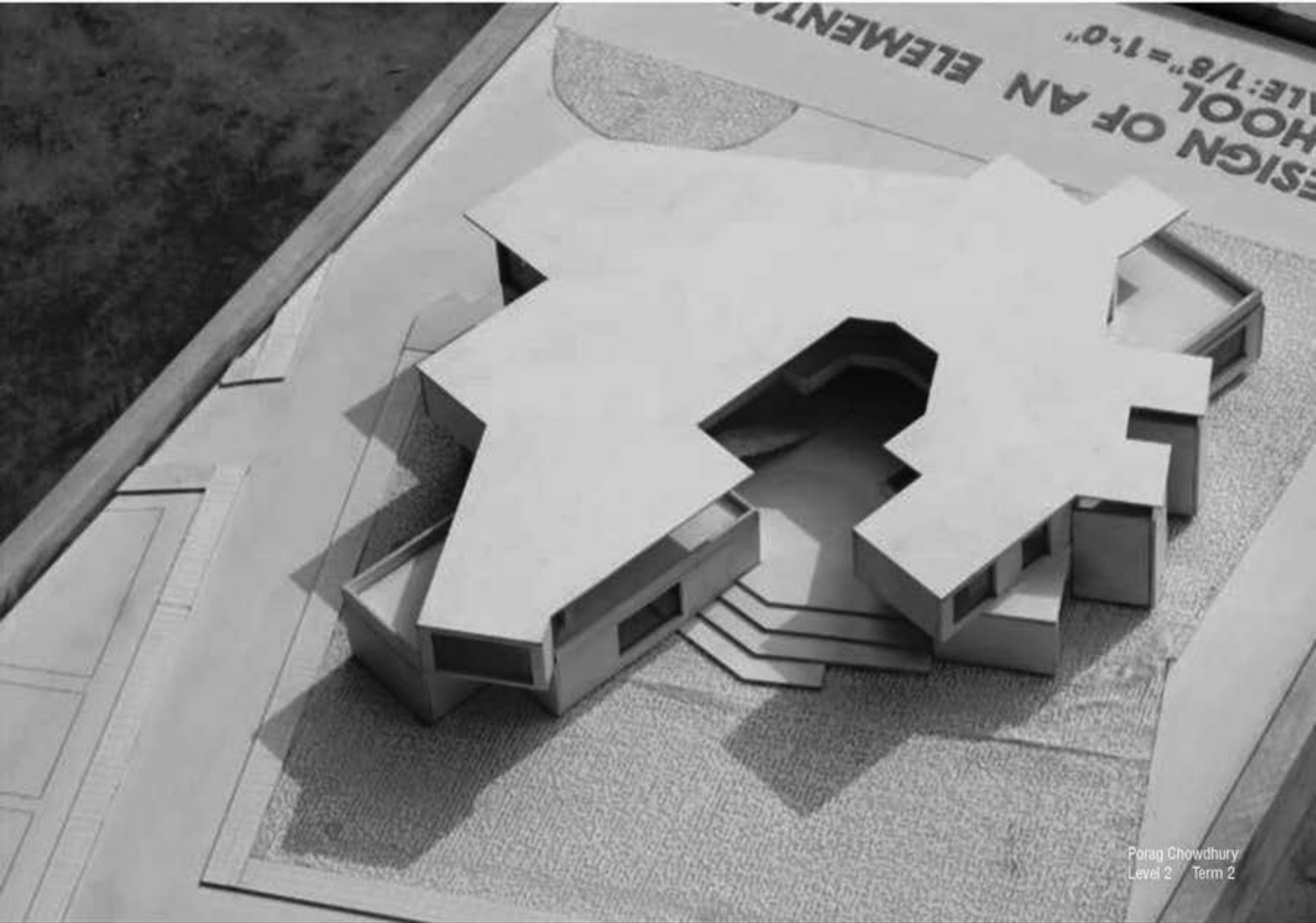


CONCEPTUAL DIAGRAM



GROUND FLOOR PLAN
SCALE: 1/8" = 1'-0"



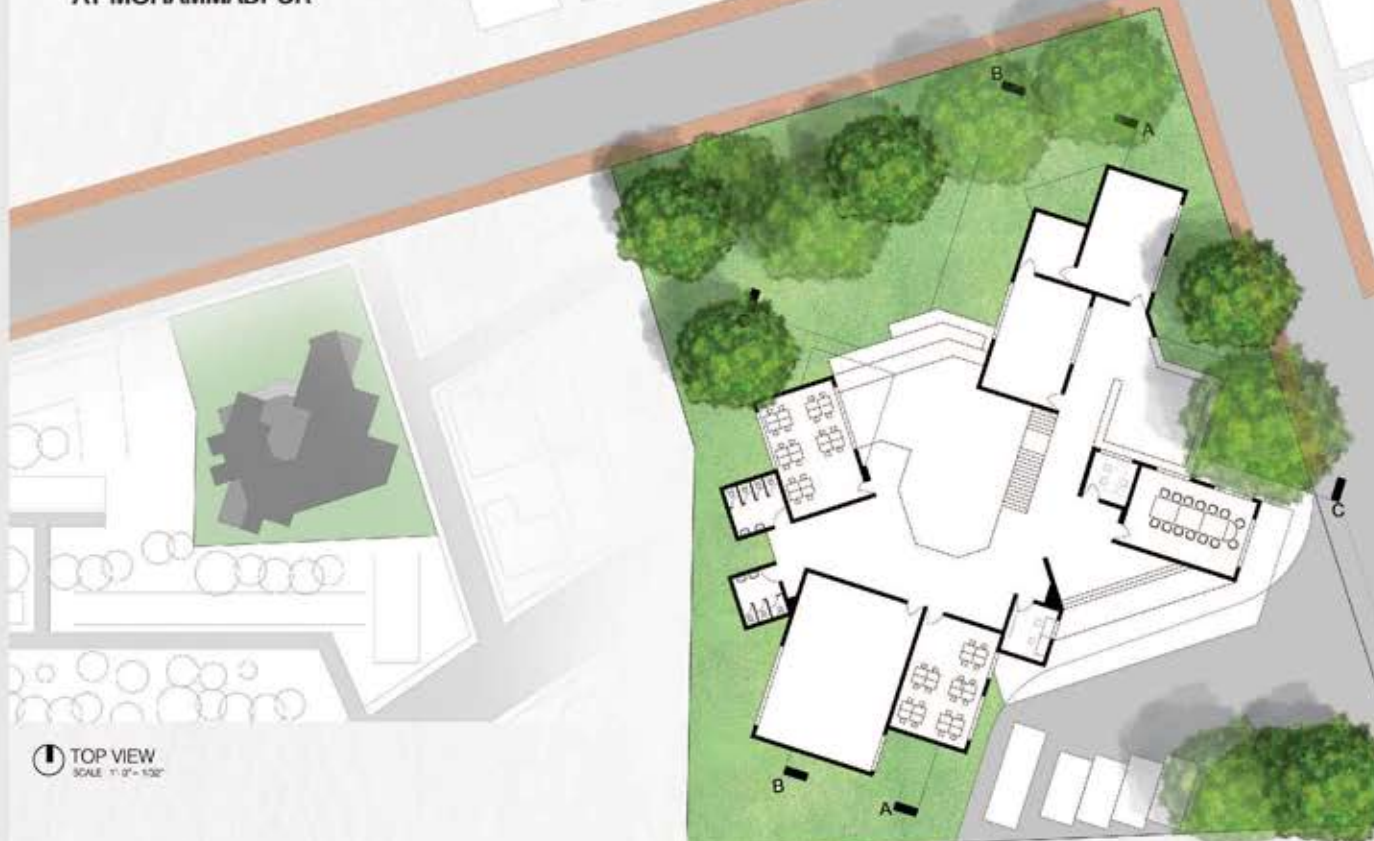


Porag Chowdhury
Level 2 Term 2



Imran Nazir
Level 2 Term 2

DESIGN OF AN ELEMENTARY SCHOOL AT MOHAMMADPUR

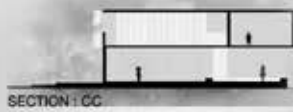


TOP VIEW
SCALE : 1" = 132'

GROUND FLOOR PLAN
SCALE : 1" = 0" = 1/8"

CONCEPT

Making some common spaces connecting with the extra curricula activity facilities of the school , where some will be open, some will be semi open or shaded spaces. Creating spatial experiences which will create memories.



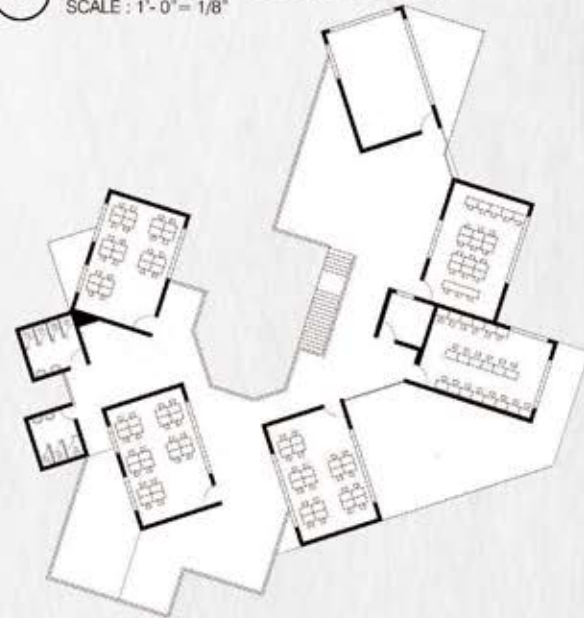
SECTION : CC



SECTION : AA



SECTION : BB



FIRST FLOOR PLAN
SCALE : 1" = 0" = 1/8"



DESIGN
STUDIO

V

DESIGN OF A STUDENT CENTER FOR UNIVERSITY STUDENTS

Location : Bangladesh Agriculture University , Mymensingh , Bangladesh

DESIGN PHASES



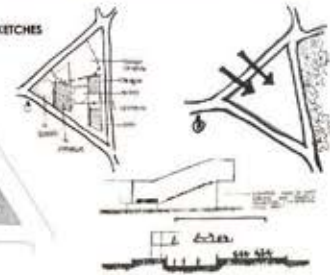
The site is around three acres and is located in Bangladesh Agriculture University, Mymensingh, Bangladesh, which is a suburban area. The program requirements are: Auditorium for 750 people, Cafeteria for 200 people, An exhibition space, 12 clubs, indoor games and parking for guests. Here the consideration of solid program was Auditorium and other were considered as fluid programs. It was a main concern to keep the ground free, so most fluid programs were placed on the ground, so it never look blocked.

The site was triangular, surrounded by one main and two secondary roads. There is a Botanical garden situated in the eastern side of the site, the student's zone is in the north-west side and the administration buildings are situated in the southern side. A volumetric understanding was done to handle the geometrical complexities in a triangular site. Creating a front yard and backyard made the project welcoming from both side of the road.

The aim of the project was understanding the problems with emphasis on form space relationship. The main challenge of the project was creating a space which can enhance students co-curricular activity. The focus of the project was to create an open front yard with the student activity zone and the backyard was created to let students explore private yard for them. An aperture was created south to north so that air can channelized in to the building mass. As the program requirements had included a massive size of auditorium, it was a benefit to place it in the west side of the building mass so that the interior can be protected from solar radiation.

The lobby was designed as an open pavilion which can be used as a shaded ground for various kind of activities. Considering other requirements of the program as fluid programs it was ensured a continuous visual connection among those programs under a same shade.

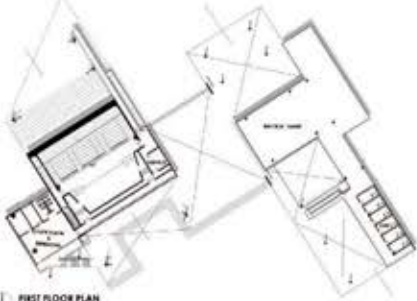
INITIAL SKETCHES



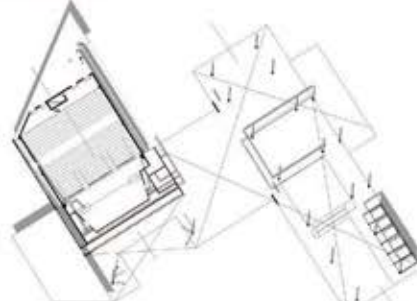
GROUND FLOOR PLAN
SCALE: 1/16" = 1'-0"



ROOF PLAN
SCALE: 1/132" = 1'-0"



FIRST FLOOR PLAN
SCALE: 1/16" = 1'-0"



SECOND FLOOR PLAN
SCALE: 1/16" = 1'-0"



WEST ELEVATION
SCALE: 1/16" = 1'-0"



EAST ELEVATION
SCALE: 1/16" = 1'-0"



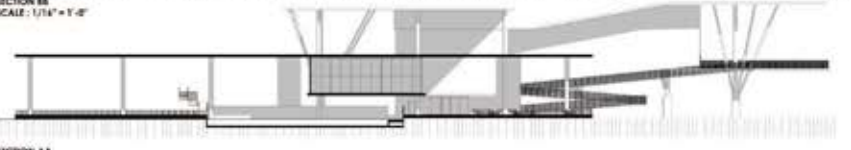
NORTH ELEVATION
SCALE: 1/16" = 1'-0"



SOUTH ELEVATION
SCALE: 1/16" = 1'-0"



SECTION BB
SCALE: 1/16" = 1'-0"

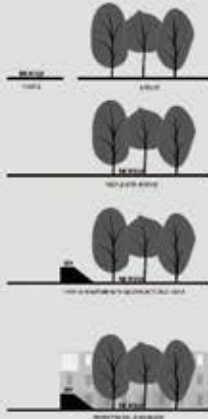


SECTION AA
SCALE: 1/16" = 1'-0"

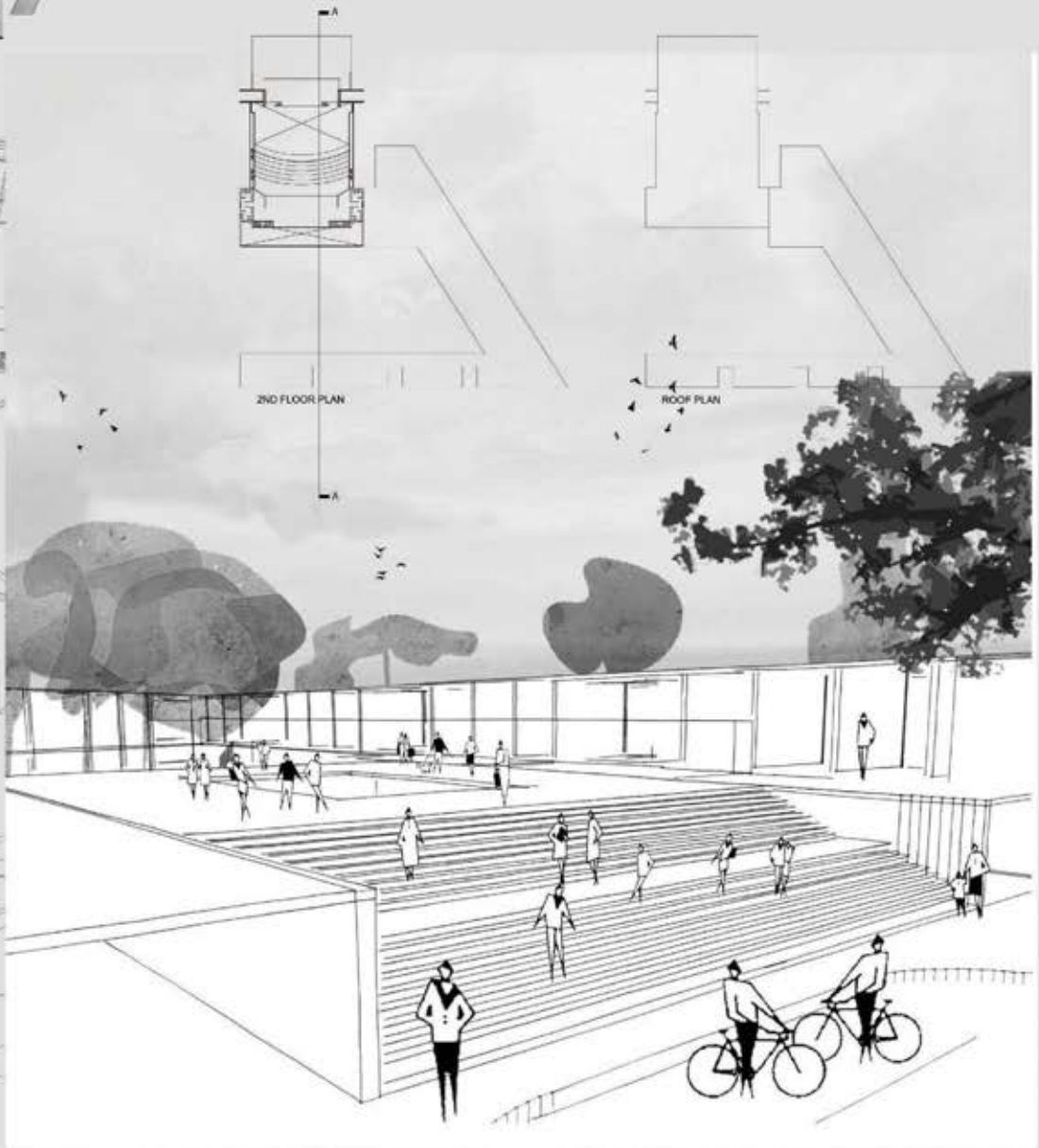
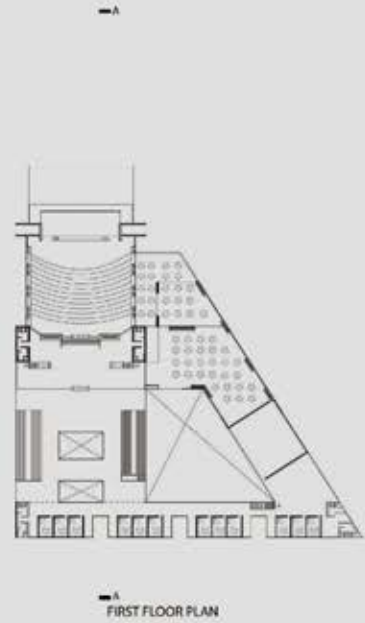
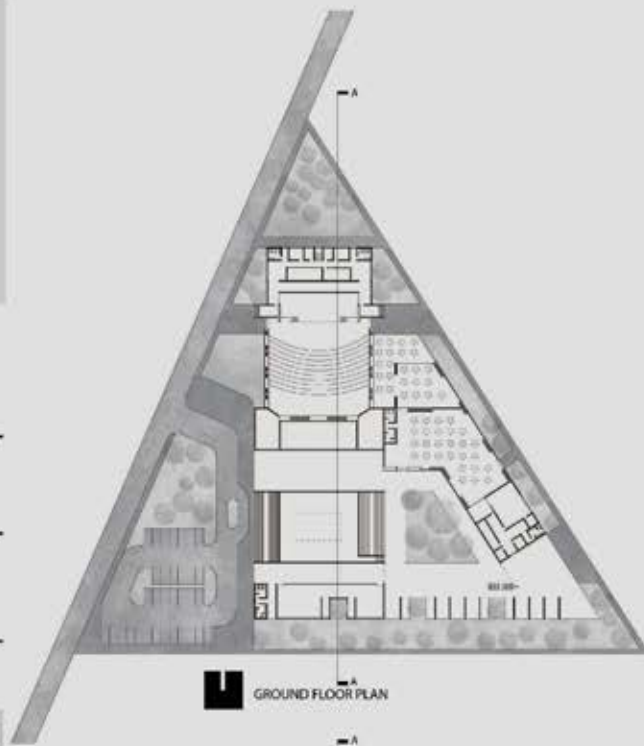


CONCEPT

THE CONCEPT WAS TO MAKE AN NATURE CONNECTED GATHERING SPACE WHICH WORKS AS A CENTER OF THE PROJECT. VISUALLY AND PHYSICALLY CONNECTED WITH OTHER PROGRAMMES



DESIGN OF A STUDENT CENTER

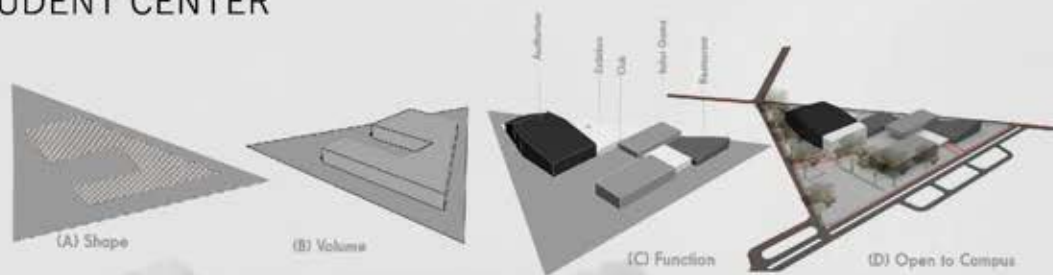


DESIGN OF A STUDENT CENTER

For University Student

It is a Student Center for University Students and the site is in Mymensingh Agricultural University, Mymensingh.

It is the largest University of Bangladesh. Around six thousand students are studying here. The campus, with an area of 4.85 square kilometres, is in scenic rural surroundings on the western bank of the old Brahmaputra River.



Project Introduction:

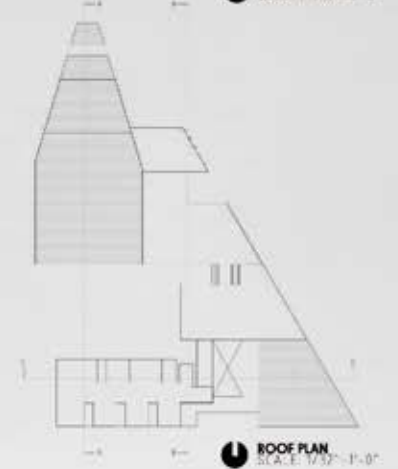
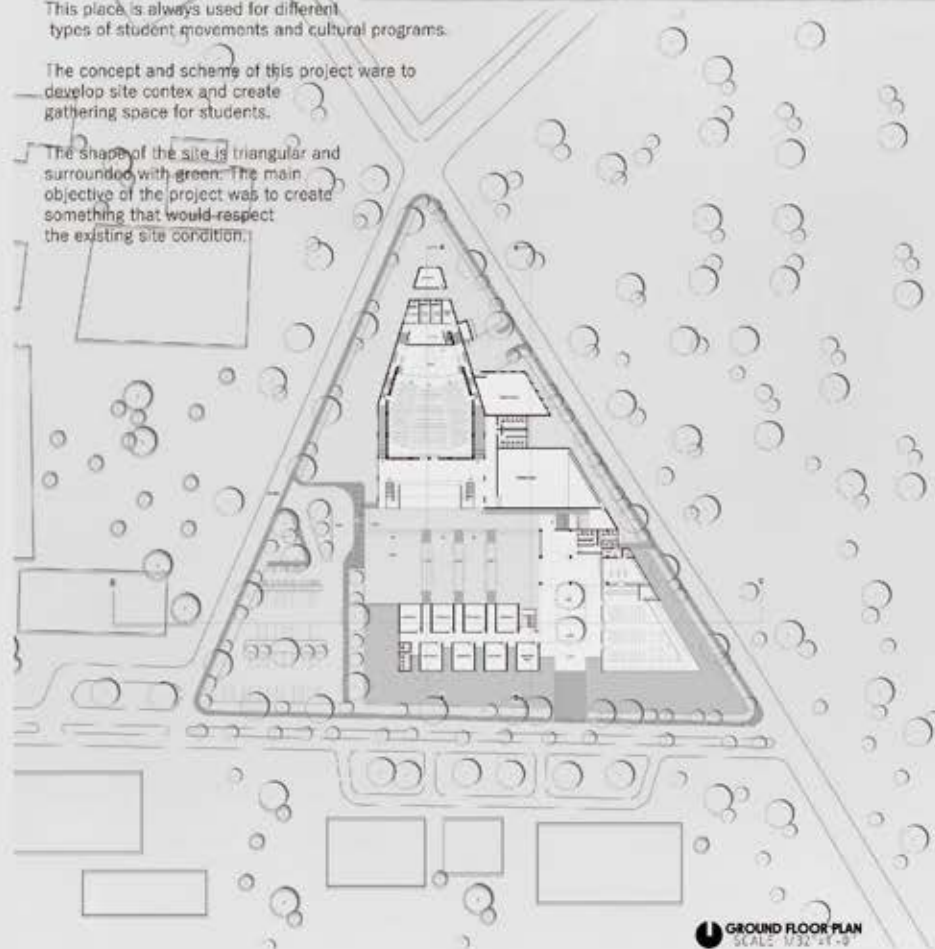
Project Name:
Designing of a Student Center
Total land area :
3 acre

Project Background:

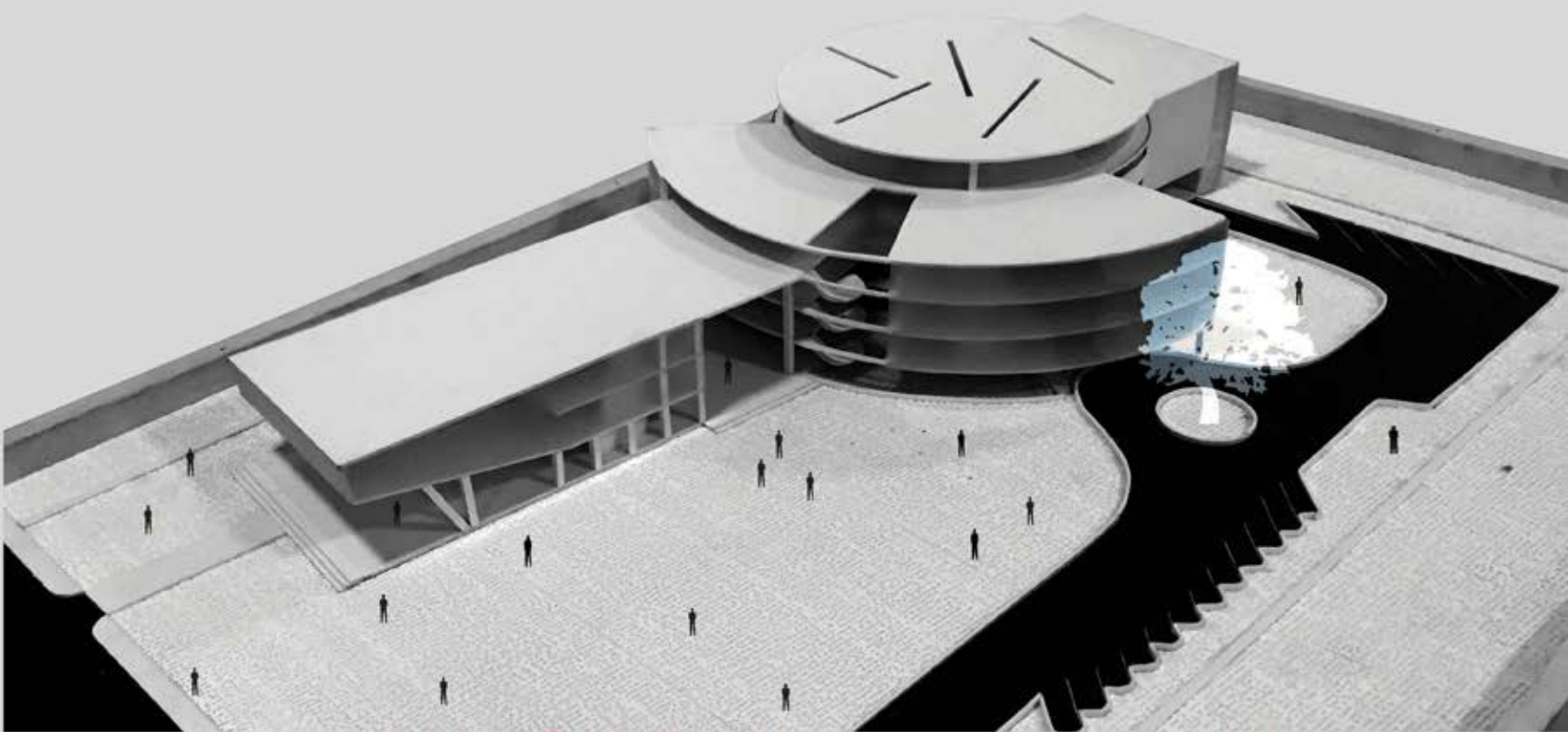
The site is in front of botanical garden and close to Brahmaputra river. One of the largest Auditoriums of Bangladesh is placed there. This place is always used for different types of student movements and cultural programs.

The concept and scheme of this project were to develop site context and create gathering space for students.

The shape of the site is triangular and surrounded with green. The main objective of the project was to create something that would respect the existing site condition.



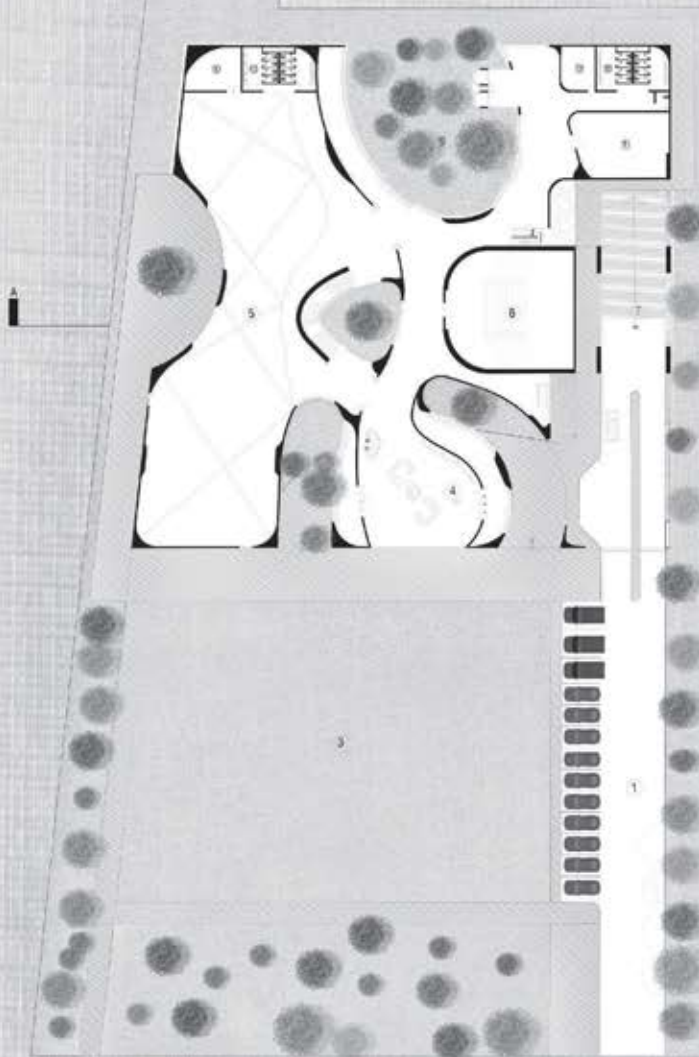




DESIGN
STUDIO

VI

MUSEUM OF CONTEMPORARY ART



Understanding the spaces for contemporary art

shock time independency participation future
BREAKING THE ORDER impression
 essence signless **FLEXIBILITY**
 contemplation memory dynamic **TEMPORARY** acceptance
 freedom progressive rejecting traditional nameless

Understanding from conceptual level

happiness is felt when sadness is understood

A rigid form without any forces

possibilities of mass respecting green coverage



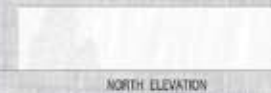
What is contemporary? How does it defer from other forms of art? Every expression that comes out of contemporary art expresses a concern. A concern for present day issues. Issues created cause of the rigid rules being misunderstood or broken. How can flexibility be achieved from a rigid geometry. What can come out of it? What would a contemporary museum look like? The design revolved around the idea of creating a time independant flow. A time-less space flowing and interacting with various layers.

Take a hammer and smash it on an ice cube. The expression was such where the rigidity was represented to have been broken. The contemporary breaking through the modern architecture language. Breaking through the expression and offering light to enter the spaces inbetween.

Expressing flexibility within rigidity and time independency .
 to create an expression for contemporary arts.

GROUND FLOOR
 SCALE : 1/16" = 1'0"

- 1. Vehicular entry
- 2. Pedestrian entry
- 3. Flexible - outdoor gallery
- 4. Reception and Archive
- 5. Main gallery
- 6. Workshop
- 7. Basement ramp
- 8. Store
- 9. Temporary gallery
- 10. Toilet



NORTH ELEVATION



WEST ELEVATION



EAST ELEVATION



SOUTH ELEVATION



SECTION AA

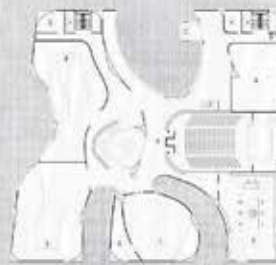


BASEMENT PLAN
 SCALE : 1/16" = 1'0"



FIRST FLOOR PLAN
 SCALE : 1/32" = 1'0"

- 1. Exhibition
- 2. Office space
- 3. Auditorium gallery room
- 4. Store
- 5. Mechanical room
- 6. Store
- 7. Contemplation library



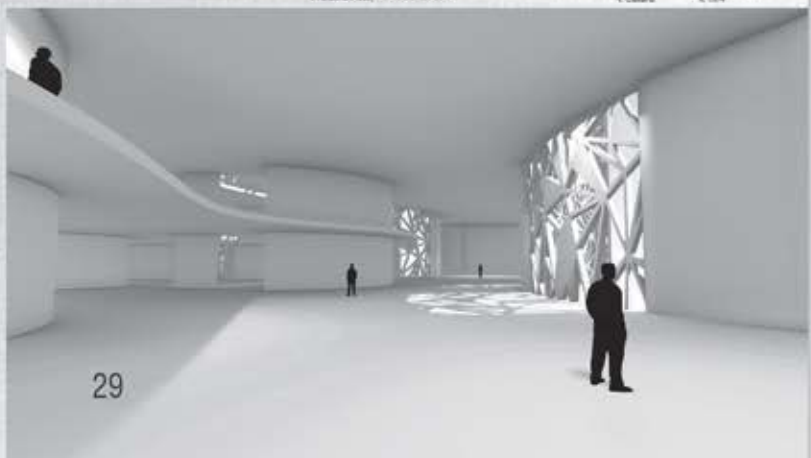
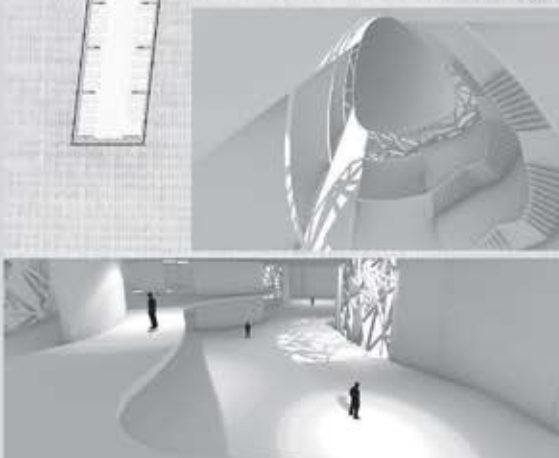
SECOND FLOOR PLAN
 SCALE : 1/32" = 1'0"

- 1. Public space
- 2. Store
- 3. Curator's Office
- 4. Auditorium lobby
- 5. Permanent gallery
- 6. 2nd space
- 7. Store
- 8. Mechanical room

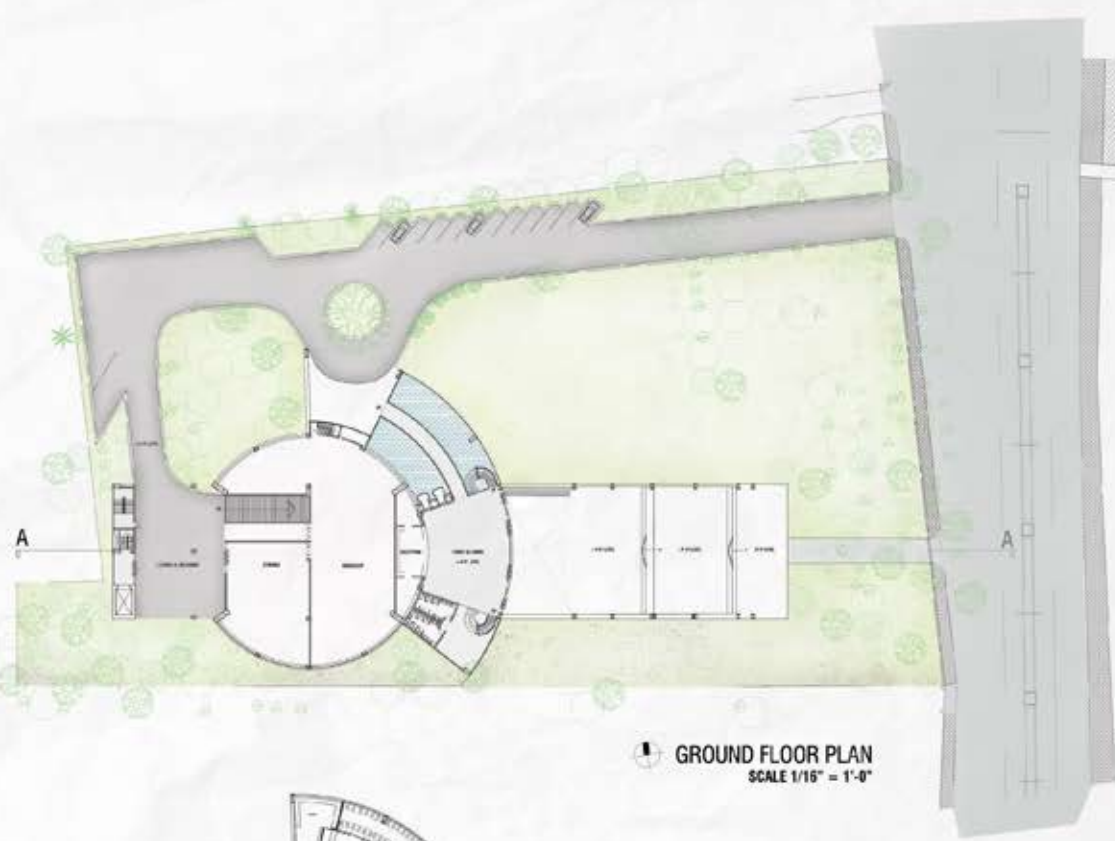


THIRD FLOOR PLAN
 SCALE : 1/32" = 1'0"

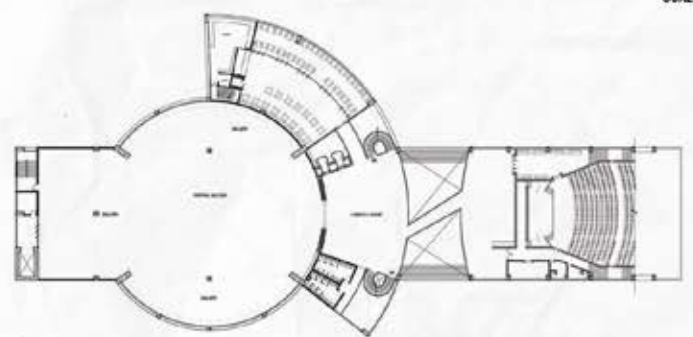
- 1. Active dual gallery
- 2. Permanent gallery
- 3. Store
- 4. Gallery
- 5. Auditorium
- 6. Store
- 7. Mechanical room
- 8. Store



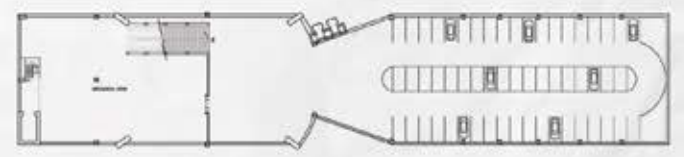
DESIGN OF CONTEMPORARY ART MUSEUM at Shahbagh



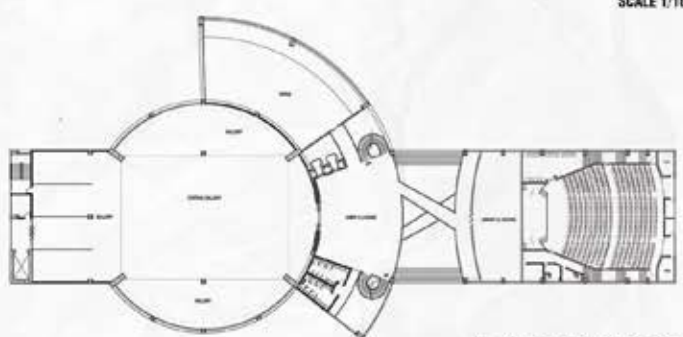
GROUND FLOOR PLAN
SCALE 1/16" = 1'-0"



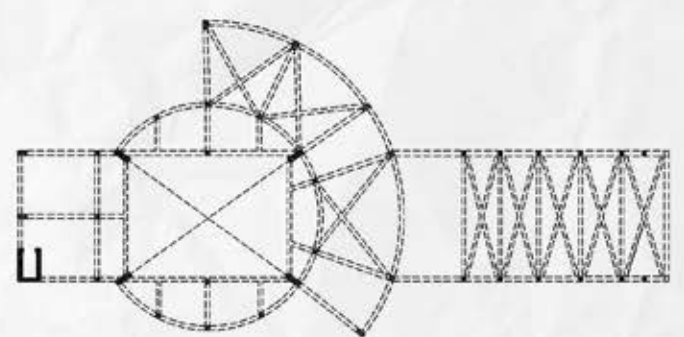
1ST FLOOR PLAN
SCALE 1/16" = 1'-0"



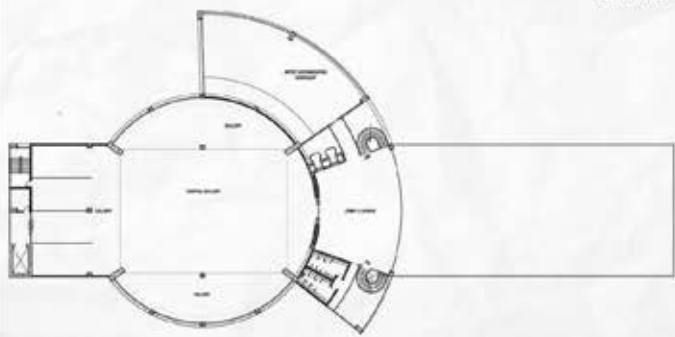
BASEMENT PLAN
SCALE 1/16" = 1'-0"



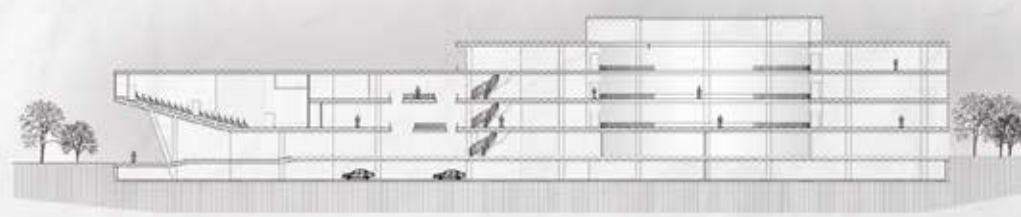
2ND FLOOR PLAN
SCALE 1/16" = 1'-0"



STRUCTURAL LAYOUT PLAN
SCALE 1/16" = 1'-0"



3RD FLOOR PLAN
SCALE 1/16" = 1'-0"



SECTION AA'
SCALE 1/16" = 1'-0"

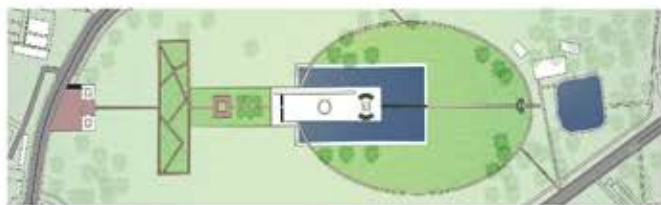
Ariful Haque Shawon
Level 3 Term 2



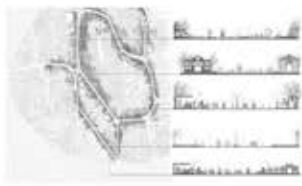
DESIGN
STUDIO **vii**

Photo: Snahasis Saha

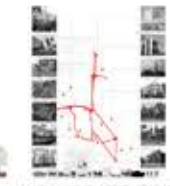
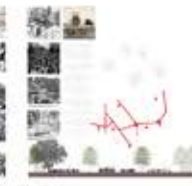
JOURNEY OF INVENTION THROUGH SHAHBAGH CULTURAL CORRIDOR



LONGITUDINAL SECTION OF SOHRAWARDI UDDYAN



- village eye
- profile eye
- street eye
- square eye
- market eye



DO PEOPLE KNOW ABOUT THE BACKGROUND STORY OF SHAHBAG?? HOW THE HIDDEN STORY WILL BE FOCUSED TO PUBLIC ?

SHAHBAG IS ONE OF THE MAIN NODES OF DHAKA CITY, TO CONSIDER THE BACKGROUND STUDY OF SHAHBAG, WE CREATE SOME CORRIDOR THAT CAN BE THE SOLUTION OF EXISTING PROBLEMS AND ALSO FOCUS & REPRESENT THE BACKGROUND STORY

WE FOCUS ON CREATING A COHESIVE DESIGN FOR THE OVERALL PROJECT TO ENSURE SMOOTH CONNECTIONS BETWEEN OUTDOOR AND INDOOR SPACES.

DESIGN GOALS
EXISTING PROBLEMS
FINDINGS, CONNECTIVITY
FOCUS THE BACKGROUND STORY,
IMPROVE THE PUBLIC REALM.

WE LOCATE FIVE NODE POINT THAT INITIALLY REPRESENT OUR JOURNEY OF EXPERIENCE FROM THESE NODES. WE NAMED IT



VIEW FROM DHAKA CLUB MUSEUM



ENTRY OF SOHRAWARDI UDDYAN THROUGH DHAKA CLUB MUSEUM



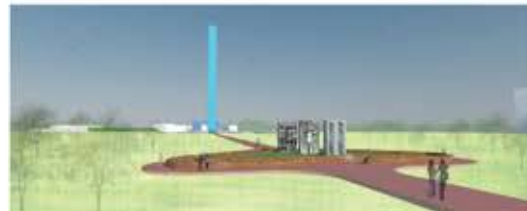
SHADHINGTA MUSEUM MAIN ENTRY



FLOWER MARKET VIEW FROM EYE LEVEL



SPACE FOR VENDORS AT AAM TOLA



MONUMENT OF MASSACRE



SHAHEED MINAR EYE LEVEL VIEW



SHAHEED MINAR PERSPECTIVE VIEW



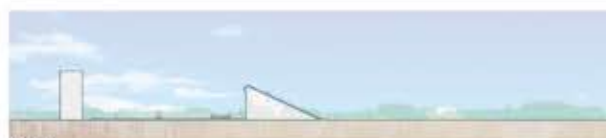
AXONOMETRIC VIEW OF SHOMAJ BIGGAN CHATTAR



KUTIR SHILPA MARKET FROM EYE LEVEL



SECTION OF DHAKA CLUB MUSEUM



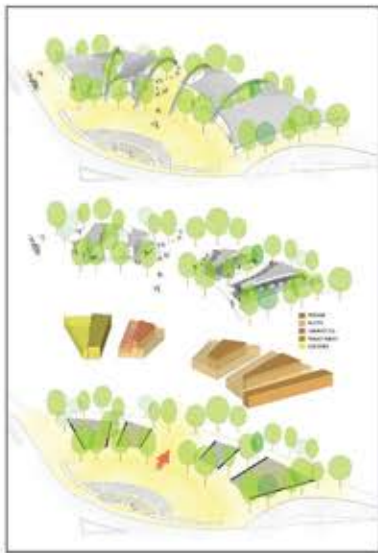
SECTION AT AAMTOLA

SHAHBAG CULTURAL CORRIDOR

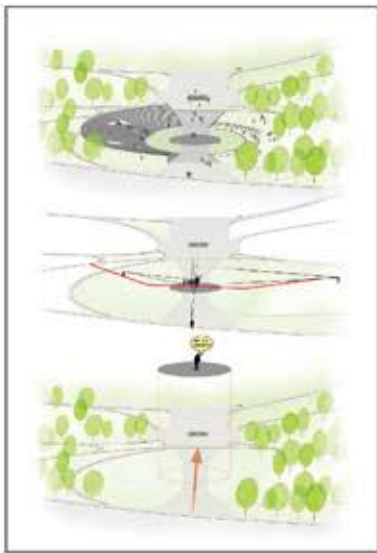
The main objective of our project was to create a journey around Shahbag and show the impact of the places which is carrying important values for many years. This project demonstrated on general category people and shows them the importance of every significant moment. Shahbag node is redesigned with an underpass idea below it which will reduce the usage of the foot over bridges. A thought about making underpass more lively and friendly by making a small amphitheater in it. Flower market made a connection between people and nature which created a welcoming approach towards Shawarawardy Uddan. The main axis is created towards "Sadhinota Stambha" and "Shikha Anirban" by "Sadhinota Moncho". People generally do not like to walk through any place without interest so we tried to keep that interest growing throughout the journey. Considering both children and adult we distributed zones inside Shahbag. Reviving dead road and making it active again. Creating significant spatial experience towards Kali Mandir and show its values as well which is connected to a road leading it towards Jagannath Hall mandirs. Other places are incorporated with people sitting and redesigning few existing places. "Kutir Shilpa Market" has been rethought again. "Chobir Haat" is introduced in a new way. TSC, DUS, "Hakim Chattar" and "Swimming Pool" has been redesigned. A small landscape intervention of Musa Khan Mosque has been done. This created a journey around our Cultural Corridor.



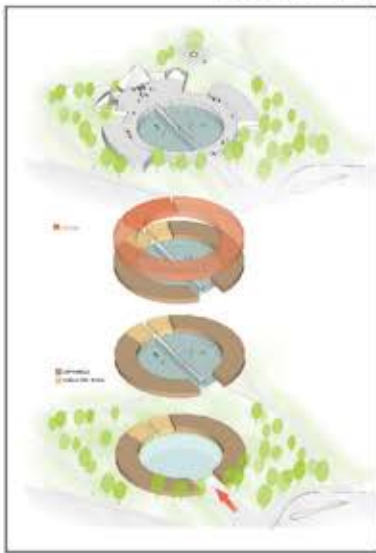
CONCEPTUAL DIAGRAM



FLOWER MARKET



AMPHITHEATER



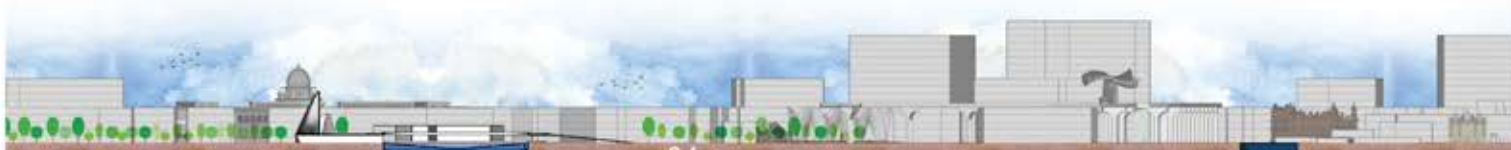
KALI MARNDIR



UNDERPASS



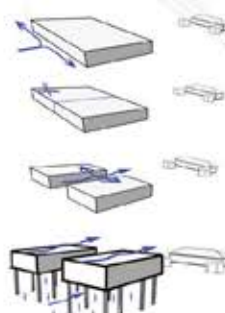
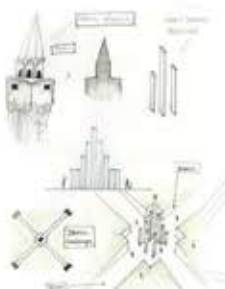
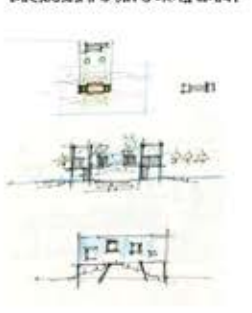
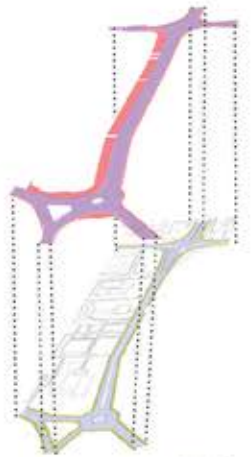
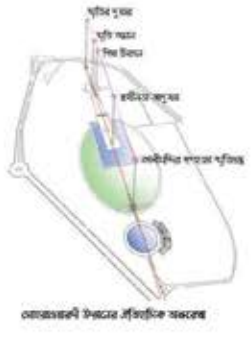
PERSPECTIVES



শাহবাগ সাংস্কৃতিক বলয়

শাহবাগ

স্মৃতি যেখানে অমান, সংস্কৃতি যেখানে চলমান
 প্রকৃতি যেখানে প্রাণবন্ত, আকাশ সেখানে সদা আগ্রত
 শাহবাগ এলাকার সমৃদ্ধ ইতিহাস নতুন প্রজন্ম ও সর্বসাধারণের কাছে তুলে ধরাই আমাদের মূল লক্ষ্য। ঢাকা বিশ্ববিদ্যালয় এলাকা সর্বদা প্রাণোচ্ছল, বয়স এখানে স্বচ্ছ। তরুণ প্রজন্ম এই এলাকার প্রাণ। এলাকা মনোপূর্ণ ইতিহাস, সংস্কৃতির সাথে তরুণ ও নতুন প্রজন্মের সংযোগ স্থাপন করাই আমাদের মূল উদ্দেশ্য।



মূলনকশা
 স্কেল - ১/১০০" = ১'- ০০"

অকস্মিক ভবন পুনঃ নকশা
 সুপরিকল্পিত ভাবে কনস্ট্রাকশনের সাথে মানুষের দৃশ্যত সংযোগ স্থাপন

সেকশন ঘঘ (সেহরাওয়ারনী উদ্যান)
 স্কেল - ১/১০২" = ১'- ০০"

সেকশন গগ (কানী মন্দির ও পশ্চিম স্মৃতিস্তম্ভ)
 স্কেল - ১/১০১" = ১'- ০০"

সেকশন কক (কাজী নজরুল ইসলাম প্রতিমিত্তি)
 স্কেল - ১/১০১" = ১'- ০০"



শাহাবাগ ফলের বাজার কেন্দ্র নতনভাবে উপস্থাপন



প্রথম পথাকা উত্তোলনের স্মৃতি, কলাভবন, ঢাকা বিশ্ববিদ্যালয়



অপারেশন সার্চলাইট ব্যাংকিং মিশরন, ফুলার রোড, ঢাকা বিশ্ববিদ্যালয় এলাকা



হেকিম চকুর ও ডিএসসি - তরুণদের মিলনমেলা



সৌভাগ্যসিমান্দা উল্লাহ অ প্রকৃতিক রেললাইনে তে করে স্মৃতির যাত্রা



গমনা কাগী মন্দির গণগ্রন্থা স্মৃতিস্তম্ভ



কাজী মজহারুল ইসলাম কলিনিক শাহাবাগে নারিকেল এমসি প্রকল্প

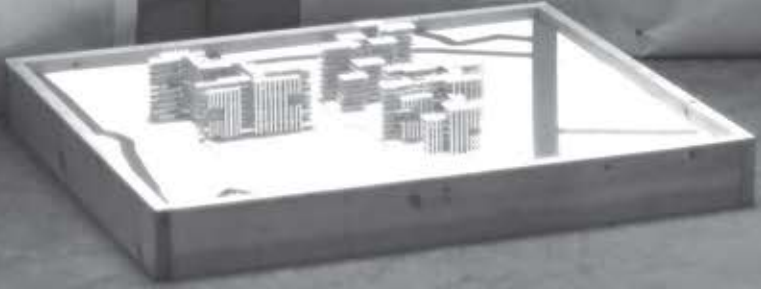
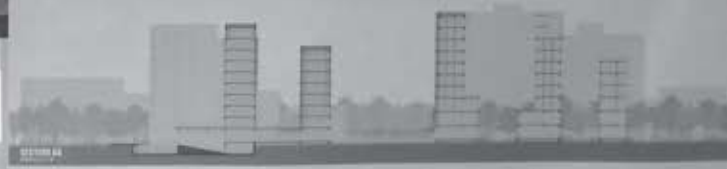
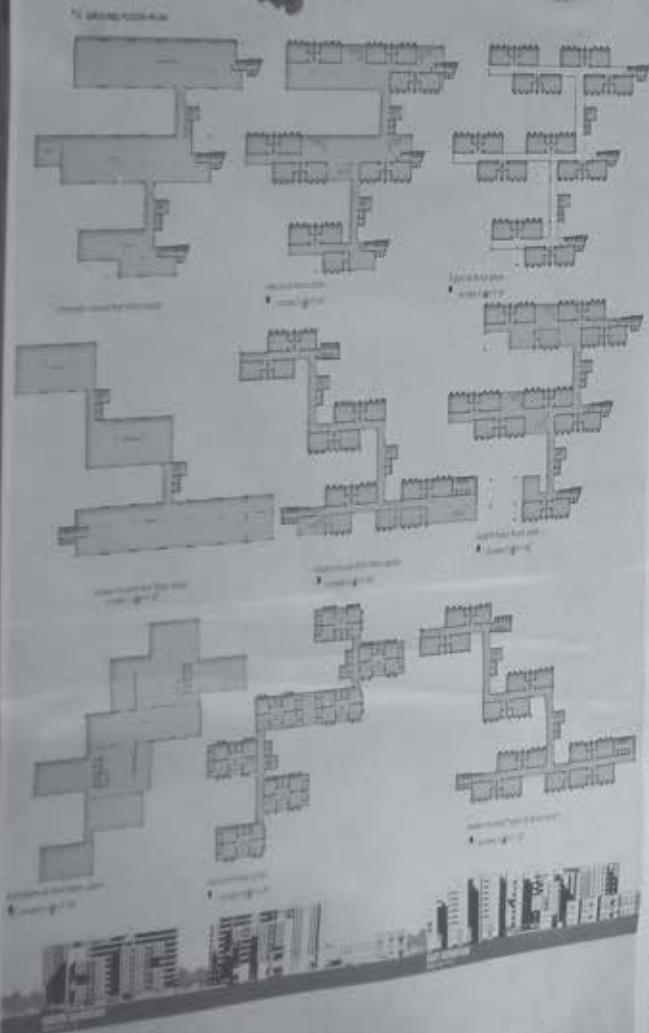


স্মৃতি চিত্রতল এর সাথে দৃশ্যক সংযোগ স্থাপন



সেকশন রহ (মথুরে কনস্ট্রাকশন ও ডাকসু কমন)
স্কেল - 1/4" = 3' - 00"

LIVING IN DHAKA, FARMGATE 2017



DESIGN
STUDIO

Viii

LIVING IN DHAKA : FARMGATE 2017 STUDENT DORMITORY AND FAMILY RESIDENCE

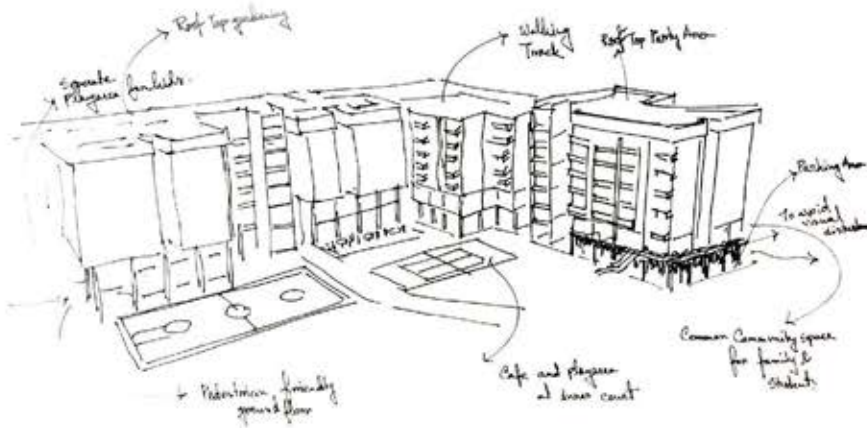
PROJECT BRIEF

LOCATION: JAHANARA GARDEN ROAD, GREEN ROAD
 SITE AREA: 4.8 ACRE (20938 SQFT)
 DENSITY: 200 PERSON PER ACRE
 FUNCTIONS TO ACCOMMODATE: DORMITORY FOR 800 STUDENTS
 FAMILY RESIDENCE
 COMMERCIAL

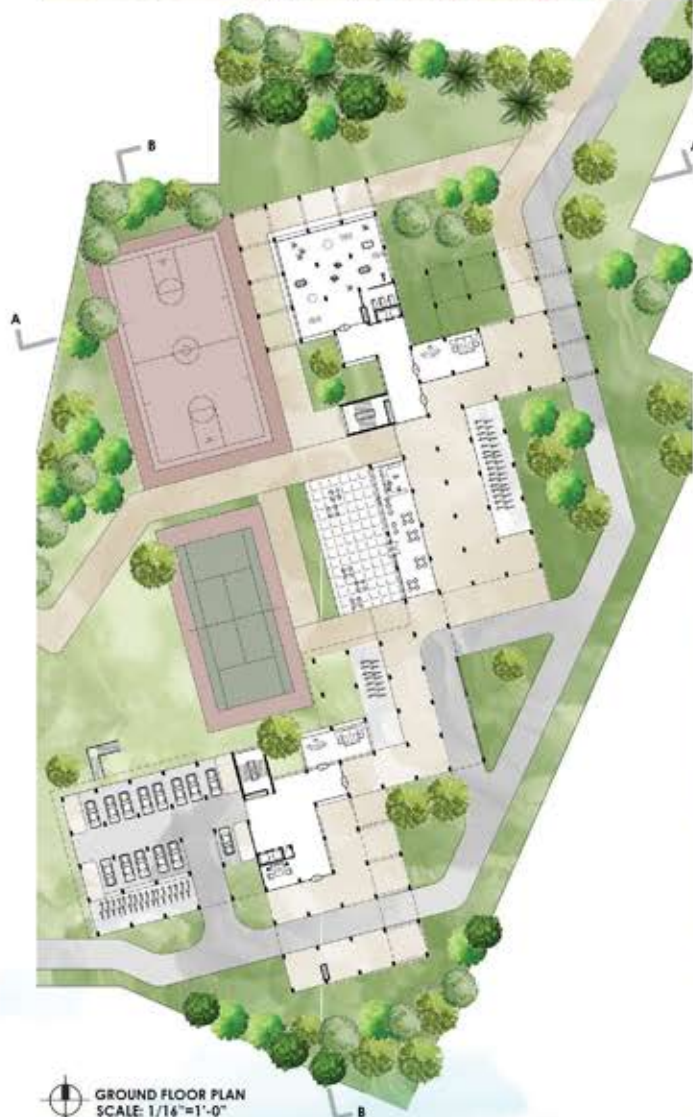
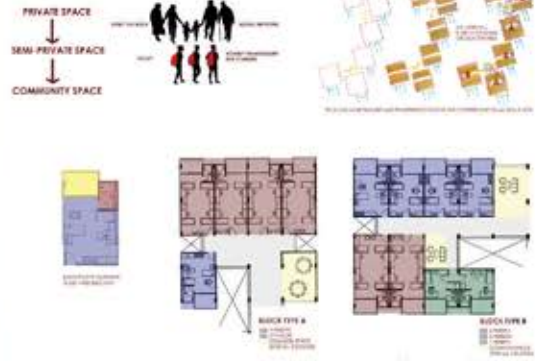
NUMBER OF BUILDING: 3
 DORMITORY UNITS: 312 (2'154)
 RESIDENTIAL UNITS: 32 (2'114)
 BUILDING HEIGHT: 7ST
 AGC: 50%

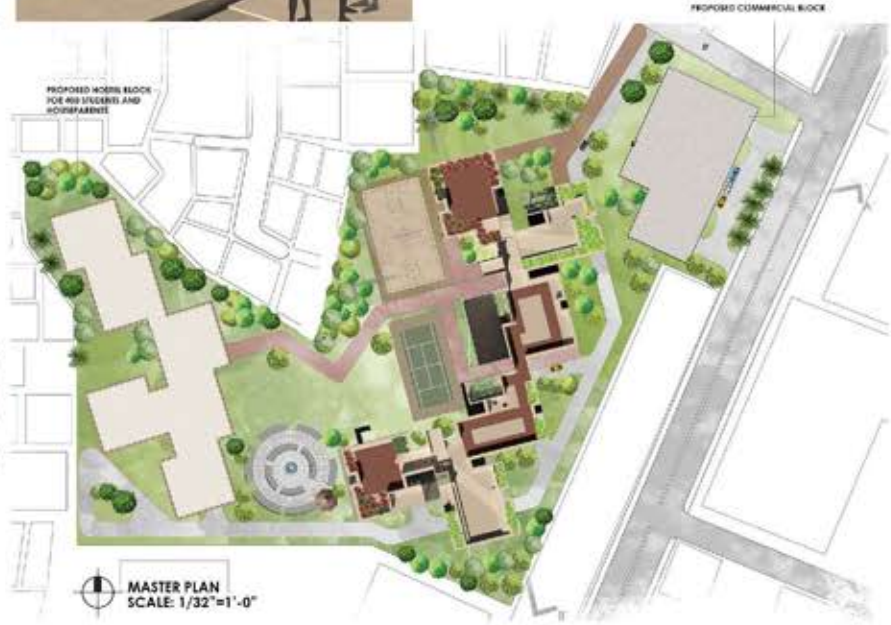
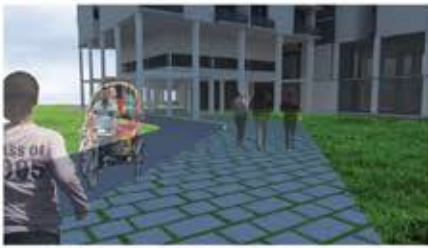


PEDESTRIAN FLOW AND NON-MOTORIZED VEHICLE
 MOTORIZED VEHICLE



IDEA GENERATION





DORMITORY (2ND-5TH) FLOOR PLAN
SCALE: 1/16"=1'-0"

6TH (RESIDENCE) FLOOR PLAN
SCALE: 1/16"=1'-0"

TOP VIEW
SCALE: 1/16"=1'-0"



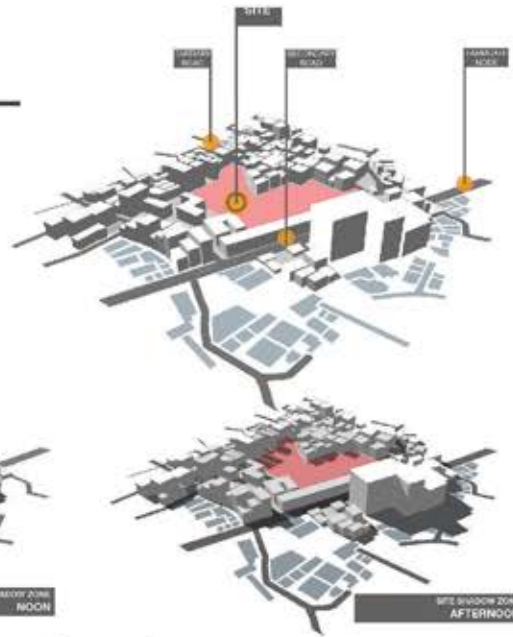
LIVING IN FARMGATE, DHAKA

DESIGN OF A NEIGHBOURHOOD OF 1200 PERSONS

SITE: GREEN ROAD, FARMGATE, DHAKA
 SITE AREA: 2.3 ACRE
 PROGRAM: 400 BED HOSTEL FOR GIRLS
 400 BED HOSTEL FOR BOYS
 50 UNITS OF FAMILY RESIDENCE
 COMMERCIAL & ANCILLARY

CONSIDERED FACTORS

- SOCIAL INTERACTION
- SECURITY
- TRANS-GENERATIONAL FACTORS



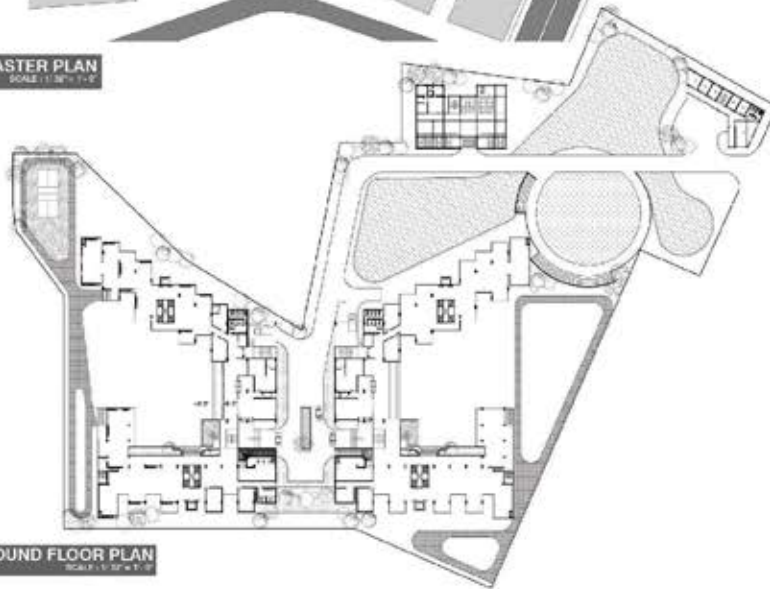
MASTER PLAN
 SCALE: 1:2000 1/8"



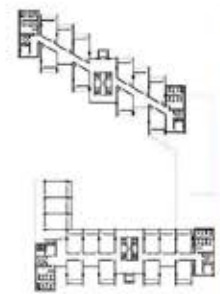
1ST FLOOR PLAN
 SCALE: 1:1000 1/8"



2ND FLOOR PLAN
 SCALE: 1:1000 1/8"



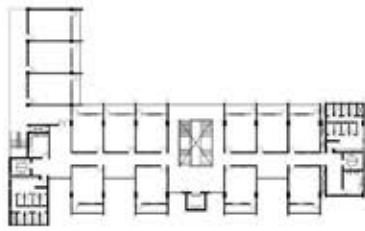
GROUND FLOOR PLAN
 SCALE: 1:500 1/8"



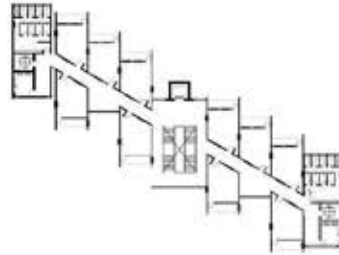
GROUND FLOOR PLAN
 SCALE: 1:500 1/8"



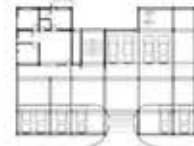
EAST ELEVATION
 SCALE: 1:100 1/8"



BLOCK PLAN SOUTH
SCALE: 1/8" = 1'-0"



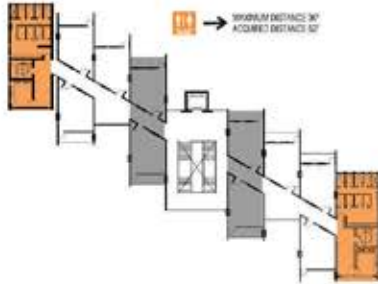
BLOCK PLAN NORTH
SCALE: 1/8" = 1'-0"



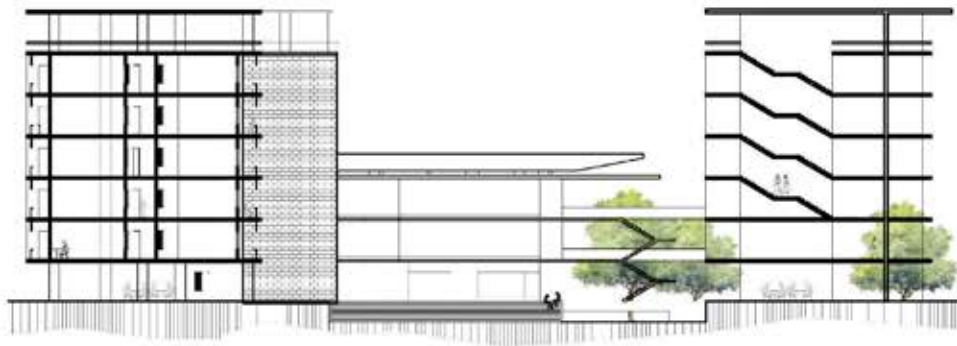
RESIDENCE_GROUND
SCALE: 1/32" = 1'-0"



RESIDENCE_TYPICAL
SCALE: 1/32" = 1'-0"



FURNITURE ORIENTATION
PER PERSON 60 SQ FT



PERSPECTIVE VIEWS

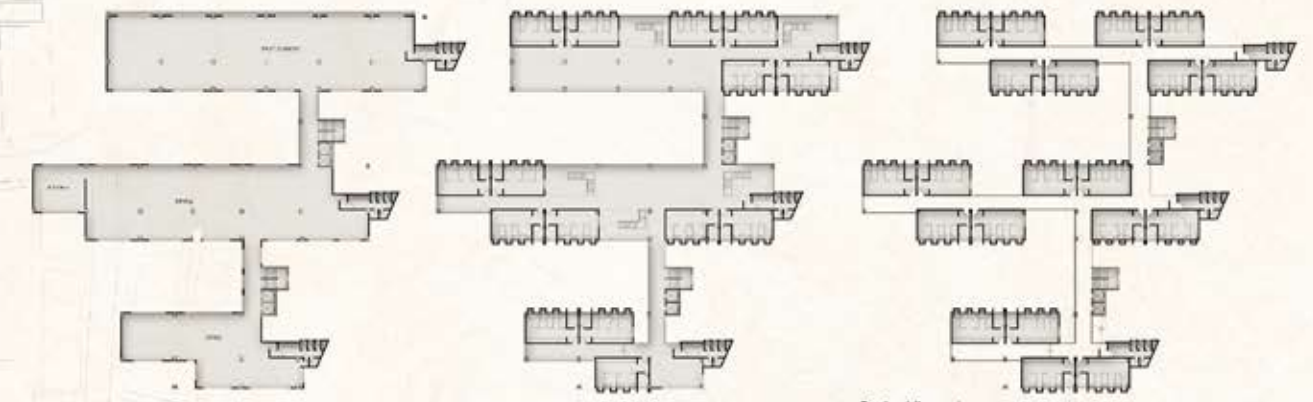


SOUTH ELEVATION
SCALE: 1/8" = 1'-0"

LIVING IN DHAKA, FARMGATE 2017



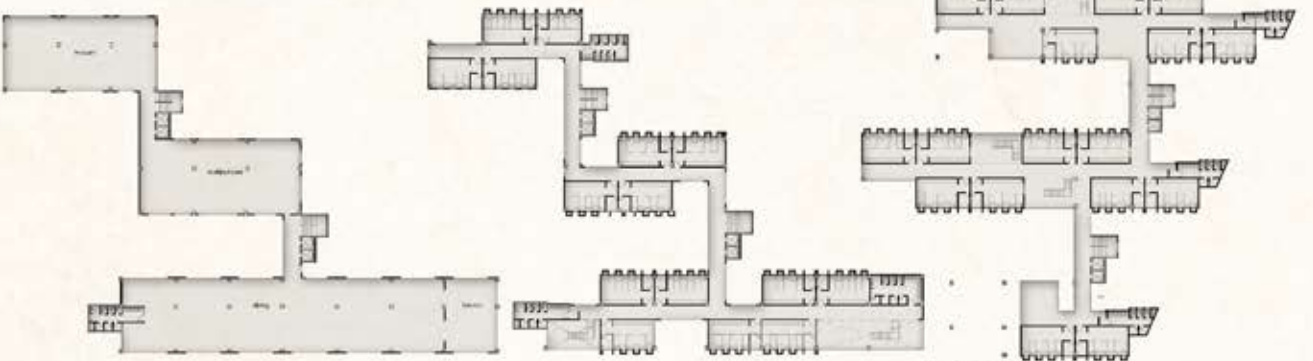
N
GROUND FLOOR PLAN



Female hostel first floor plan

second floor plan
scale: 1/8"=1'-0"

Typical floor plan
scale: 1/8"=1'-0"



Male hostel first floor plan
scale: 1/8"=1'-0"

male hostel fifth floor plan
scale: 1/8"=1'-0"

eight floor floor plan
scale: 1/8"=1'-0"



Residence First floor plan
scale: 1/8"=1'-0"

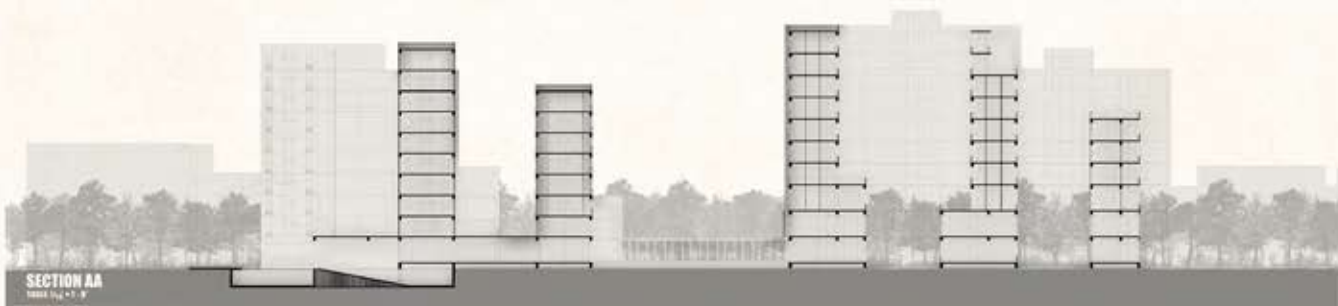
typical floor plan
scale: 1/8"=1'-0"

Male hostel Typical floor plan
scale: 1/8"=1'-0"



SOUTH ELEVATION
scale: 1/8"=1'-0"

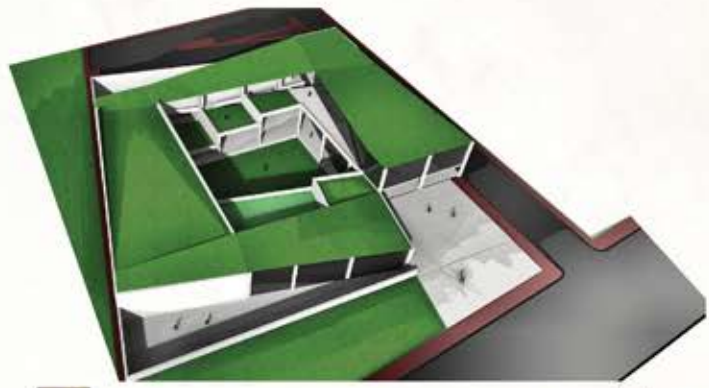
EAST ELEVATION
scale: 1/8"=1'-0"



DESIGN
STUDIO

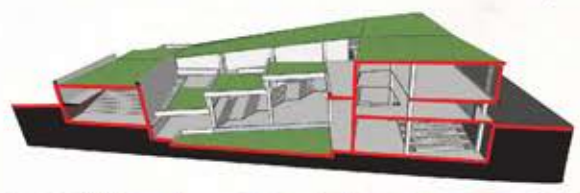
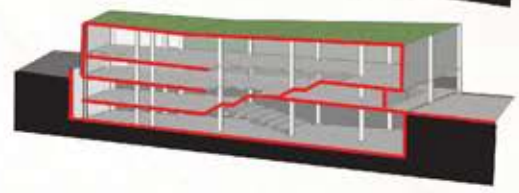
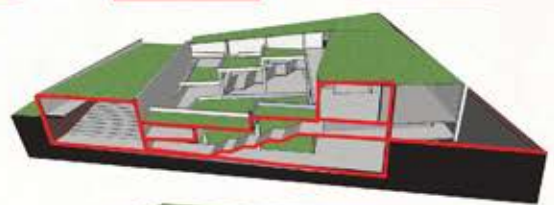
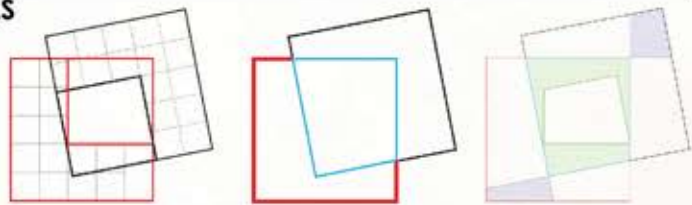
iX

DESIGN OF A DIPLOMATIC COMPLEX AT BARIDHARA, DHAKA



LEVEL AT 5'-0" (GROUND FLOOR PLAN)
SCALE: 1/32"=1'-0"

CONCEPTUAL IDEAS



LEVEL AT -15'-0"
SCALE: 1/32"=1'-0"



LEVEL AT -5'-0"
SCALE: 1/32"=1'-0"



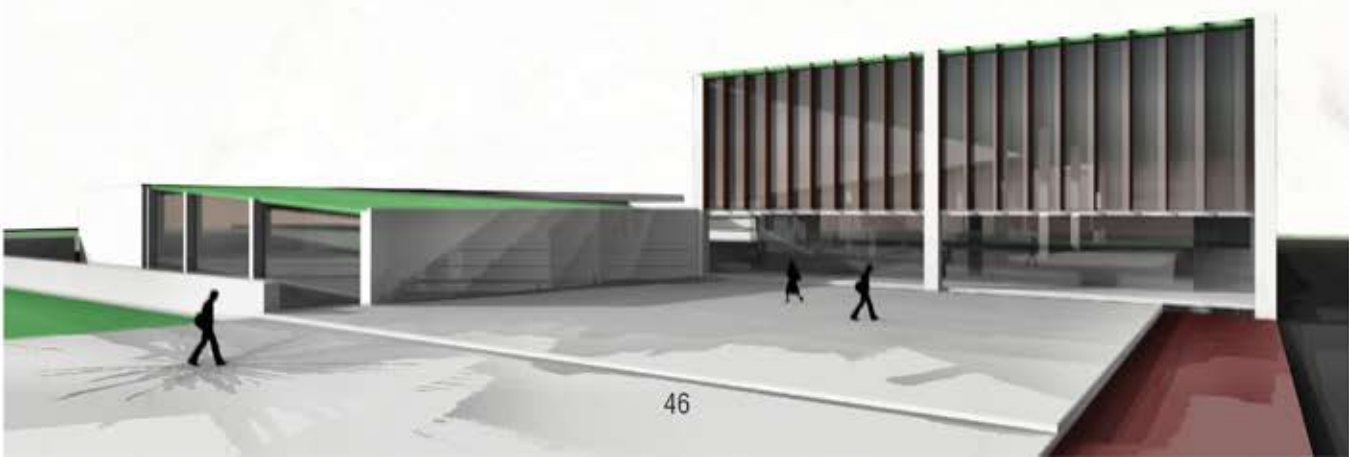
LEVEL AT 15'-0" (FIRST FLOOR PLAN)
SCALE: 1/32"=1'-0"



SECTION-BB
SCALE: 1/8"=1'-0"



SECTION-AA
SCALE: 1/8"=1'-0"







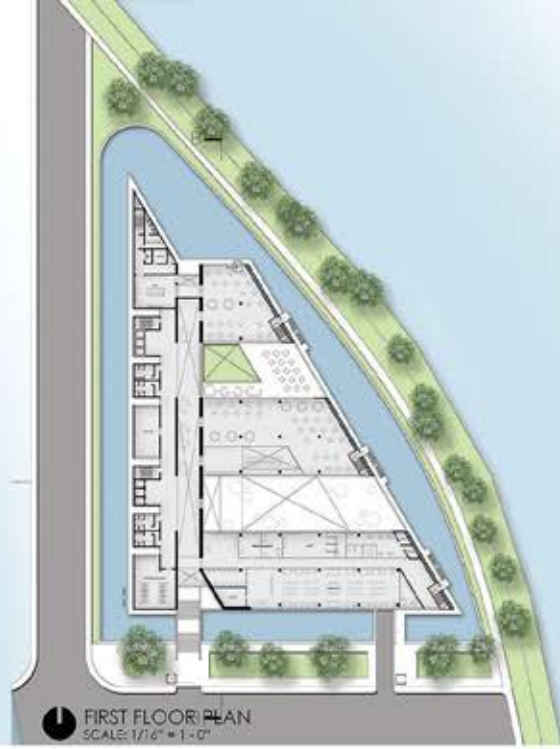


DESIGN
STUDIO

X



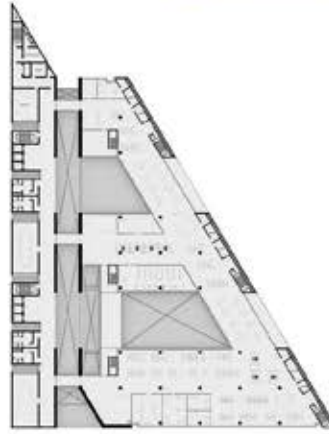
GROUND FLOOR PLAN
SCALE: 1/16" = 1'-0"



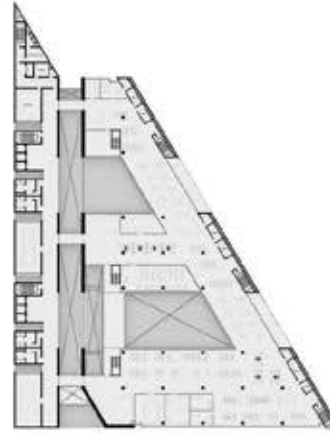
FIRST FLOOR PLAN
SCALE: 1/16" = 1'-0"



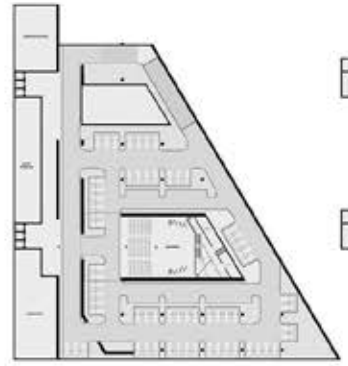
2nd, 4th & 6th FLOOR PLAN
SCALE: 1/16" = 1'-0"



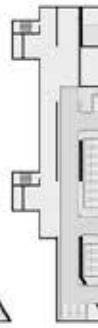
3rd & 5th FLOOR PLAN
SCALE: 1/16" = 1'-0"



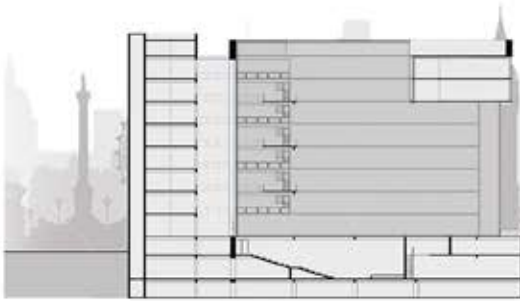
7th FLOOR PLAN
SCALE: 1/16" = 1'-0"



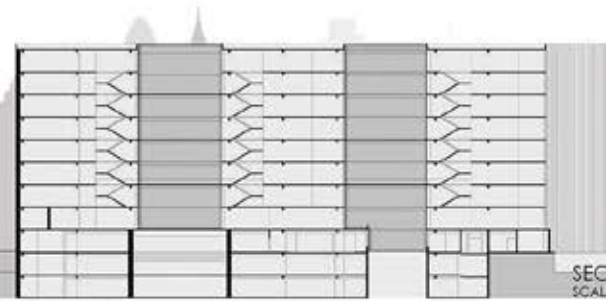
1st BASEMENT PLAN
SCALE: 1/16" = 1'-0"



SCALE: 1/16" = 1'-0"



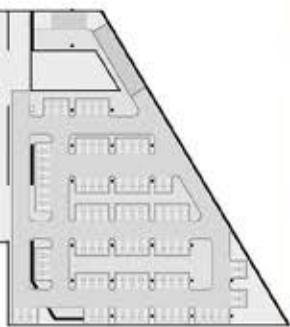
SECTION AA
SCALE: 1/16" = 1'-0"



SCALE: 1/16" = 1'-0"



UN COMMON PREMISES AT PUR

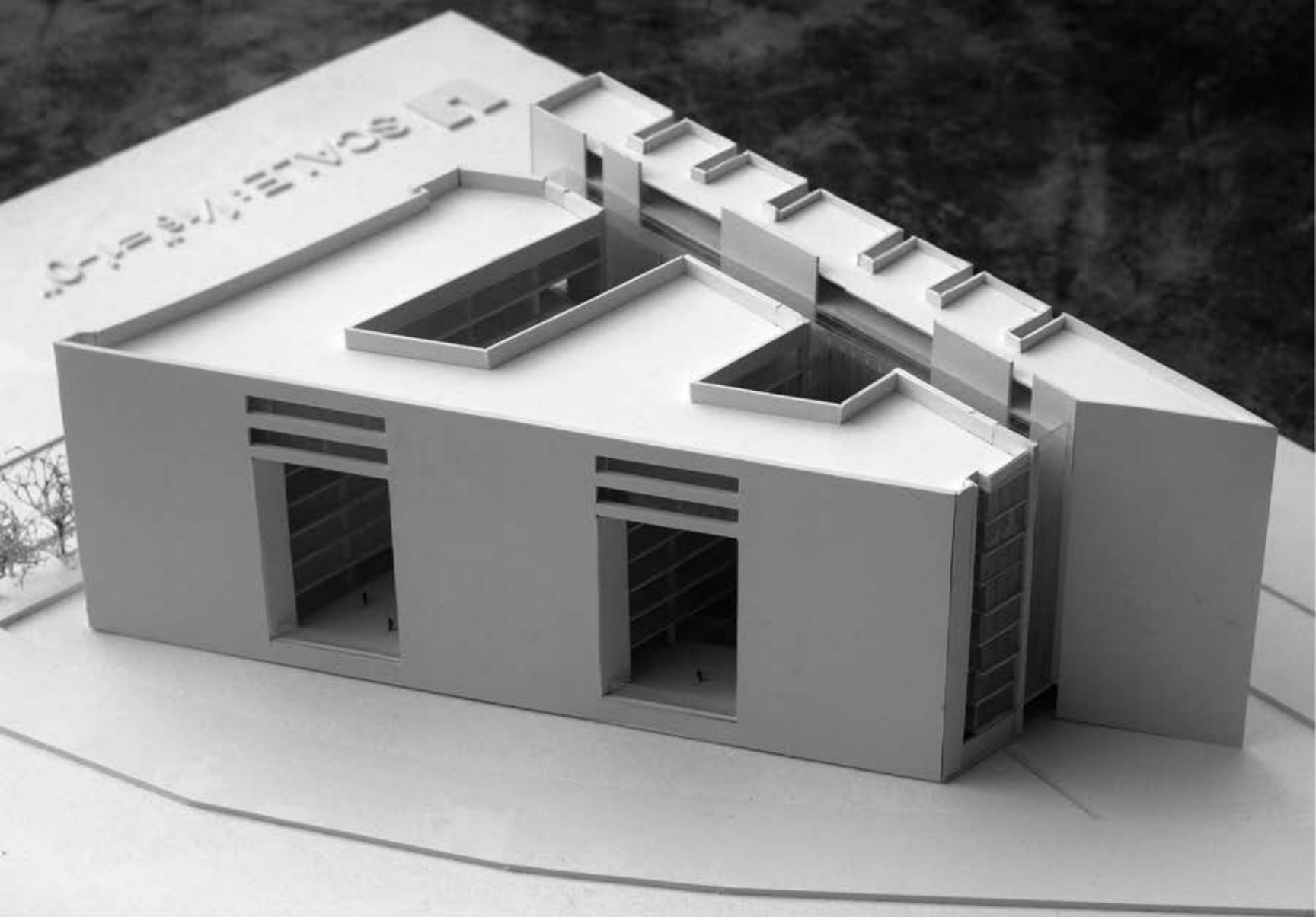


2ND BASEMENT PLAN
SCALE: 1/16" = 1'-0"



SECTION BB
SCALE: 1/16" = 1'-0"







SHILPACHARYA ZAINUL ABEDIN ART CENTER , at MYMENSINGH



zainul abedin was born in a muslim family, founder of **modern art**, known as the **shilpacharya** in Bangladesh for his artistic and visionary qualities.

PROJECT NAME: ZAINUL ART CENTER
 SITE: MYMENSINGH
 SITE AREA: 5.3 ACRES
 CLIENT: MINISTRY OF CULTURAL AFFAIRS

ART SCHOOL MUSEUM

TIMELINE

His life mostly influenced by



30's period
 struggling period of his life
 very early period of his life
 mostly influenced by nature
 believed in van tradition



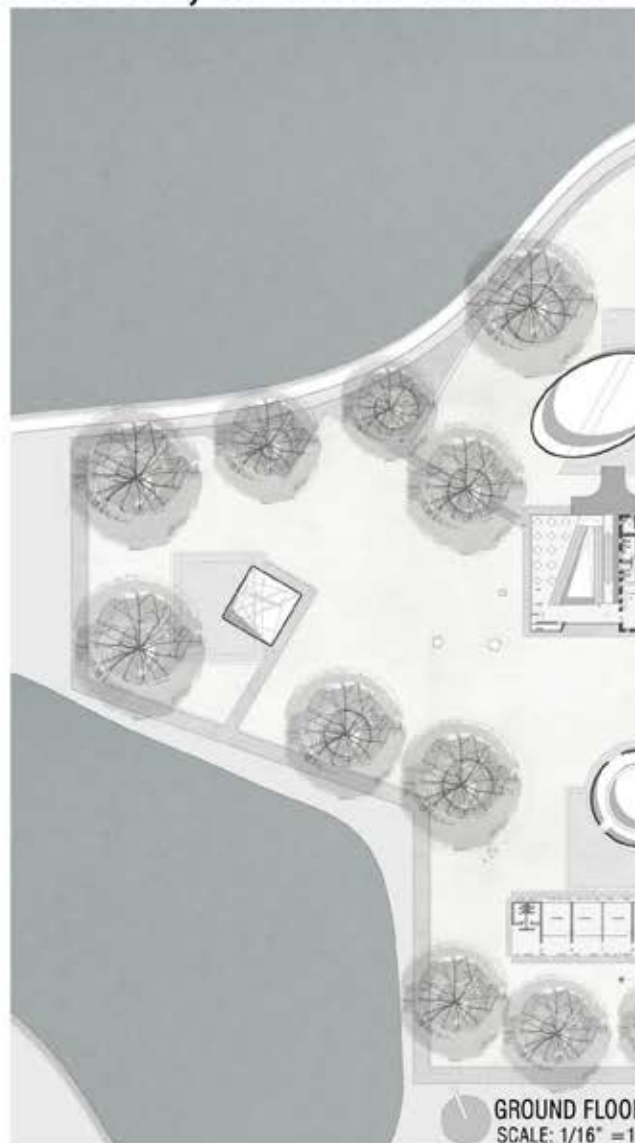
40's period
 witness the bengal famine
 show the aggression through his
 paintings
 By these famine paintings he took
 part in social and political
 disturbance indirectly
 revealed the famine's sinister
 face through his paintings.



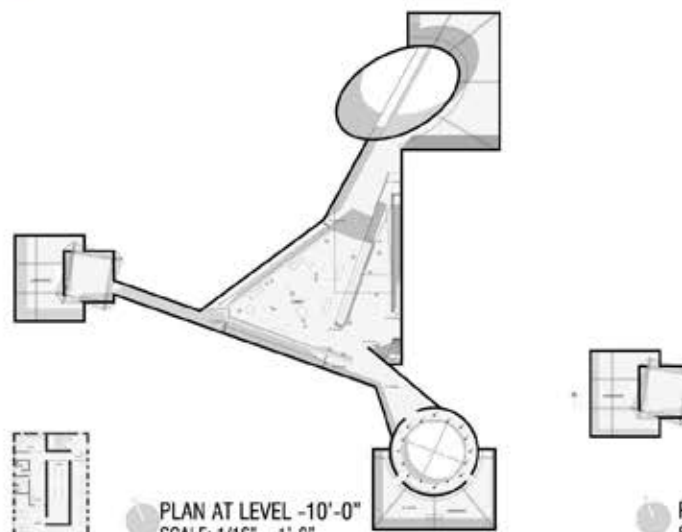
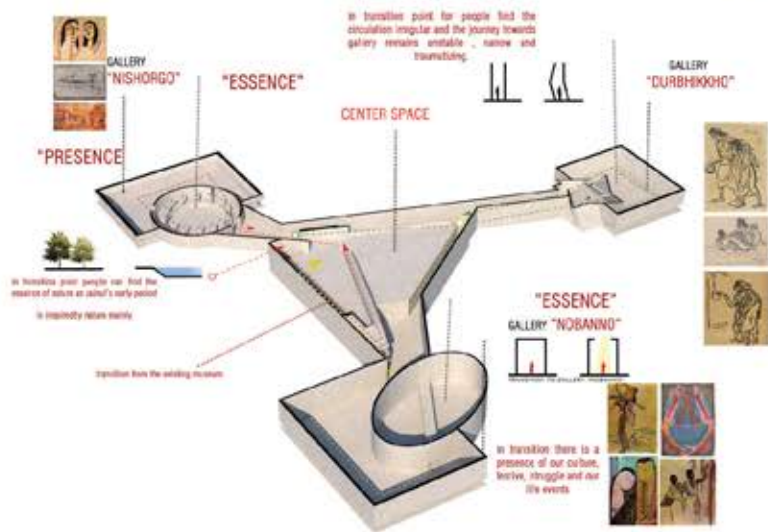
50's - 70's period
 longest period of his life
 took part in many international
 conference
 Became the nation builder very soon
 Concentrated on our tradition and
 make initiative to show them to the
 world.
 founded the fine arts institute and
 seargam folk and craft museum.



DESIGN DECISION



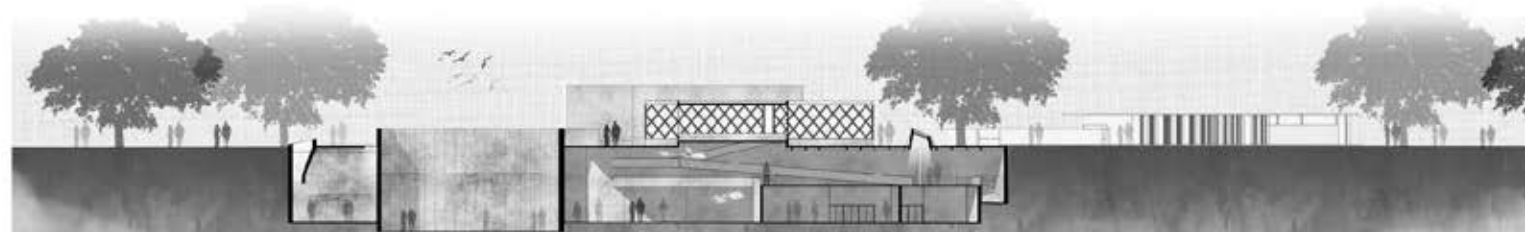
GROUND FLOOR
 SCALE: 1/16" = 1'-0"



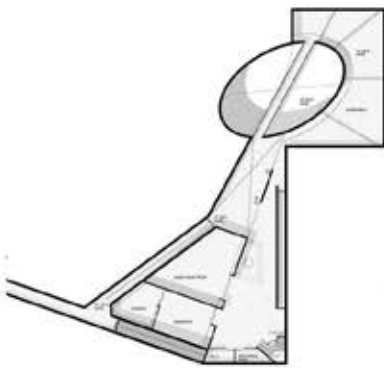
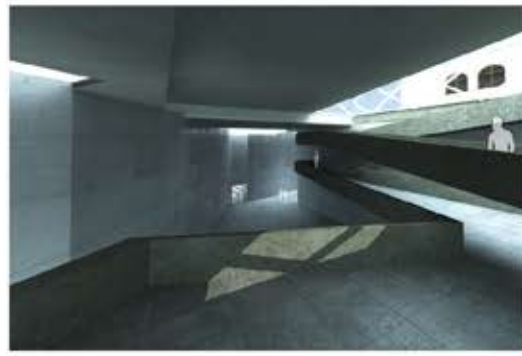
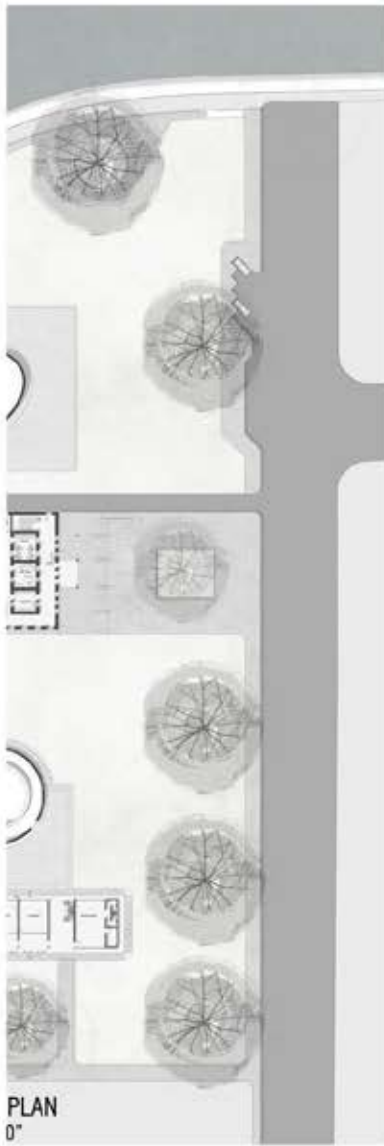
PLAN AT LEVEL -10'-0"
 SCALE: 1/16" = 1'-0"



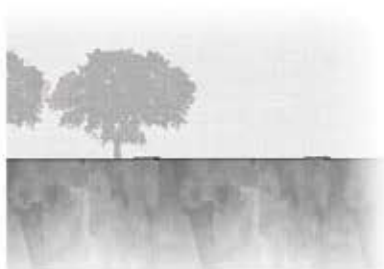
SECTION AA
 SCALE: 1/8" = 1'-0"



SECTION CC
 SCALE: 1/8" = 1'-0"



AN AT LEVEL -25'-0"
ALE: 1/16" = 1'-0"



SECTION BB
SCALE: 1/8" = 1'-0"

OPEN DAY

Student Projects Exhibition, Fall 2017
29th November | 30th November | 1st December

DAY 01

4:00pm - 9:00pm

Exhibition Open- 4:00pm

Place

Central Plaza, University Of Asia Pacific
Open for all

DAY 02

10:00am - 9:00pm

Discussion Session 01 Life After Graduation

5:00pm - 8:00pm

Alumni and Student
Architecture Department, UAP

Place

8th floor, Dept. of Architecture

DAY 03

10:00am - 9:00pm

Discussion Session 02 Teacher Student Gossip

5:00pm - 8:00pm

With Teacher and Current Student
Architecture Department, UAP

Place

8th floor, Dept. of Architecture

Exhibition

Drawings of Ar. Muzharul Islam

courtesy: Muzharul Islam Archive



University of Asia Pacific
Department of Architecture

A program of



Organised By



Participants:

Sinthia Trisha, Sadia Afrin Mou, Rifat Fariya Rafa, Anonnya Mehjabeen, Atezad Renan, Anasua, Mark Ankon, Imran Khan, Toufique Hasan, Hassim Reza, Towsifur Rahman, Shuchita Tasnim, Afreena Ontee, Farhad Tamzid Ali, Naznin Rimi, Shafiqul Islam, Ariful Haque Shawon, Seiam Afroz Ahmed, Shams Suhaib, Umme Tahmina Haque, Khondaker Farhan Israq, Mahmudul Gani, Imran Nazir, Sharifulah Md Shazid, Porag Chowdhury, Yeasin Arafat, Mohammad Nayem, Tabassum Sultana

Workshop on Architectural Model Making Fall 2017

Dare to use your hand like.....
Professionals

Architecture department, Jury Space

3rd November

Time: 10am to 5pm

4th November

Time: 10am to 9pm

Model will be Exhibited on Open Day Program



Architecture Department
University of Asia Pacific



A program of



Organised by

organized by:





